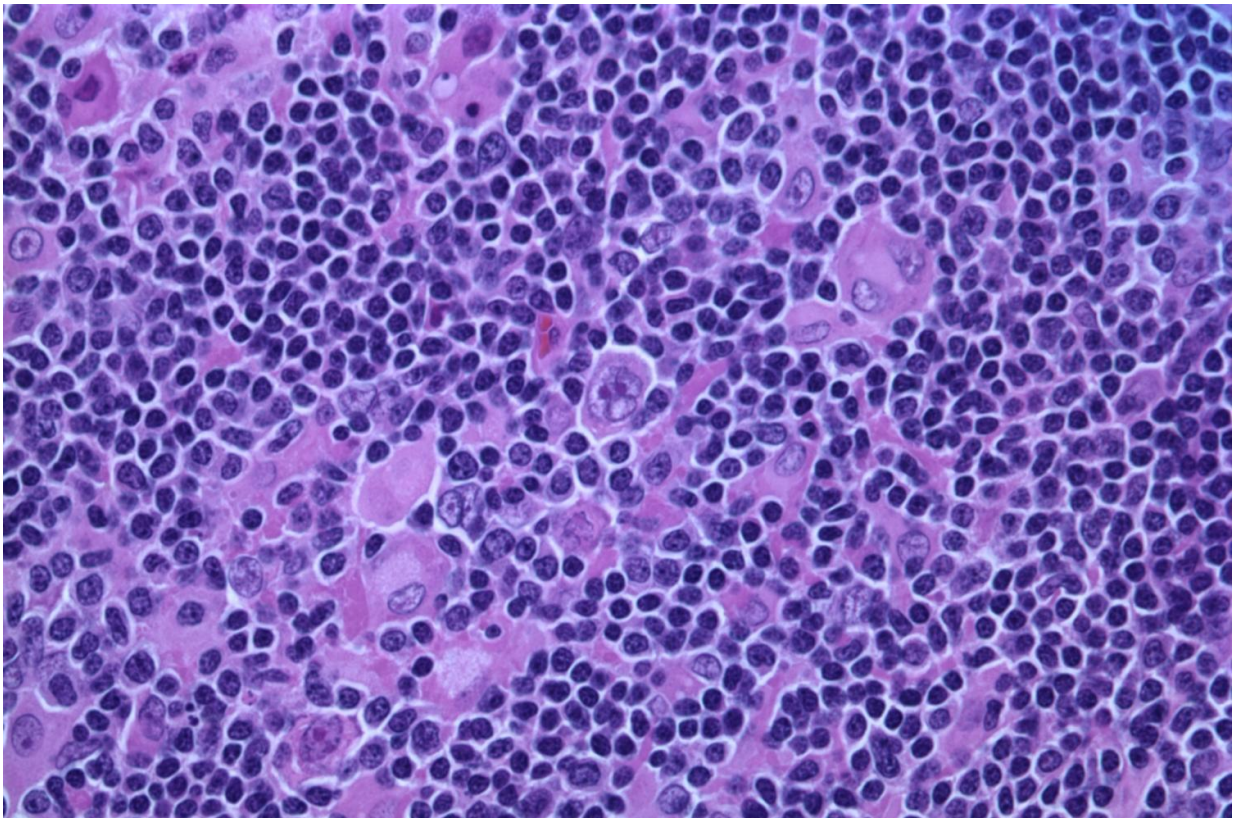


# Management of refractory or relapsed classic Hodgkin lymphoma in Brazil

December 20 2023

---



Hodgkin lymphoma, nodular lymphocyte predominant (high-power view) Credit: Gabriel Caponetti, MD./Wikipedia/CC BY-SA 3.0

A [new review paper](#) titled "Current perspectives on the management of refractory or relapsed classic hodgkin lymphoma in Brazil: Balancing

efficacy, safety, and tolerability" has been published in *Oncotarget*.

Classic Hodgkin lymphoma (CHL), which accounts for 90–95% of all cases of Hodgkin lymphoma, is the most frequent cancer in adolescents and the most frequent lymphoma in adolescents and [young adults](#).

Despite progressive improvements over past decades and the general sensitivity of CHL to frontline chemotherapy, approximately 10–15% of patients have refractory disease that either does not respond to such therapy or progresses after an initial partial response.

In [patients](#) with refractory or relapsed disease, [standard treatment](#) until recently consisted mainly of salvage chemotherapy, in many cases followed by high-dose chemotherapy and autologous stem-cell transplantation. However, improved understanding of the pathobiology of CHL, coupled with the introduction of novel agents, has markedly changed the treatment landscape in the past decade. Although refractory or relapsed CHL continues to be challenging, the therapeutic landscape is undergoing profound changes brought about by novel agents, particularly brentuximab vedotin and immunotherapy.

In this new review, the researchers discuss the most salient treatment options for [adult patients](#) with refractory or relapsed CHL, with a special focus on the Brazilian health care setting, which is constrained by inherent characteristics of this system.

"In the attempt to balance efficacy, safety and tolerability, practicing physicians must rely on [clinical trials](#) and on results from real-world studies, and use their own point of view and experience, as well as patient characteristics and previous therapy, to make treatment decisions for refractory or relapsed CHL," the researchers observe.

**More information:** Flávia Dias Xavier et al, Current perspectives on the management of refractory or relapsed classic hodgkin lymphoma in

brazil: Balancing efficacy, safety, and tolerability, *Oncotarget* (2023).  
[DOI: 10.18632/oncotarget.28541](https://doi.org/10.18632/oncotarget.28541)

Provided by Impact Journals LLC

Citation: Management of refractory or relapsed classic Hodgkin lymphoma in Brazil (2023, December 20) retrieved 28 April 2024 from <https://medicalxpress.com/news/2023-12-refractory-relapsed-classic-hodgkin-lymphoma.html>

This document is subject to copyright. Apart from any fair dealing for the purpose of private study or research, no part may be reproduced without the written permission. The content is provided for information purposes only.