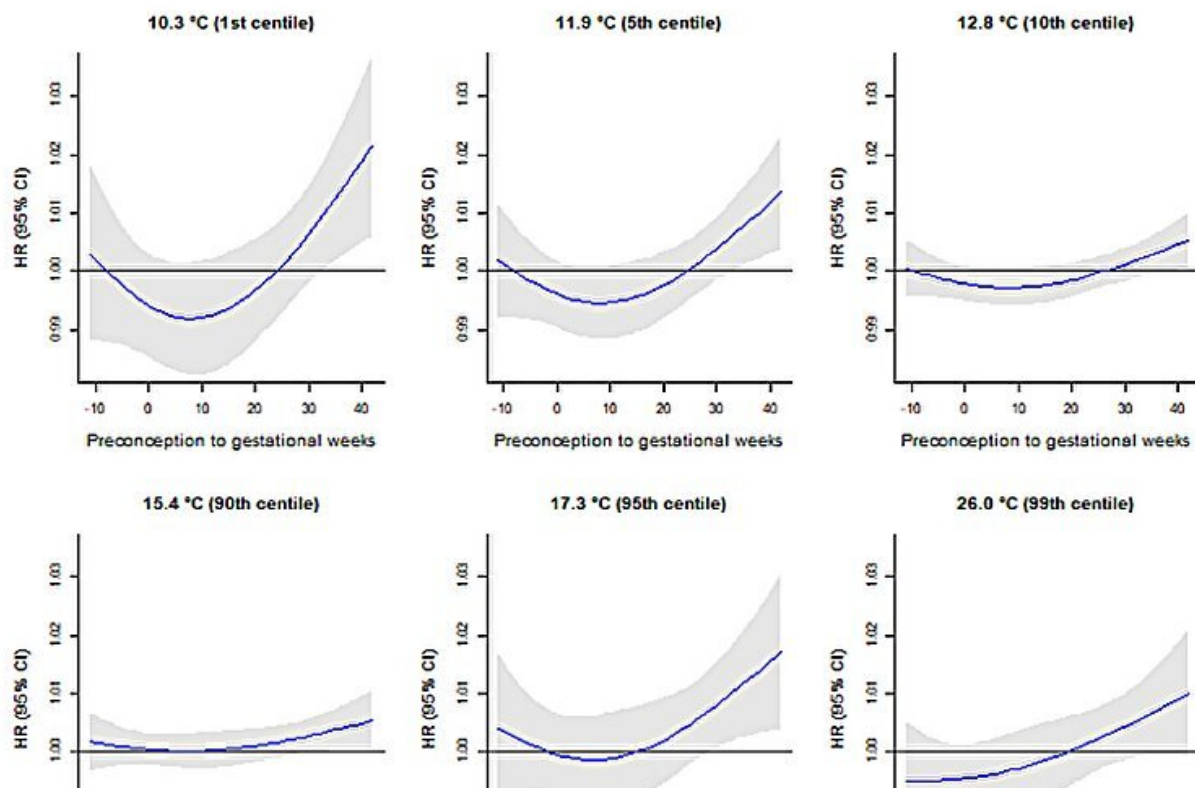


# Climate change could be impacting Australian babies' birthweight for gestational age

January 8 2024, by Samuel Jeremic

## SGA



Adjusted HRs of SGA and LGA associated with the weekly specific UTCI over the 12-wk preconception (-11 to 0) through to gestational week at delivery (1 to 42) at different thresholds of UTCI using the median of 14.2°C as reference. Solid blue lines represent point estimates, and the shaded area represents 95% CIs. Note: CI, confidence interval; DLNM, distributed lag nonlinear models; HR,

hazard ratio; LGA, large for gestational age at >90% birth weight; SGA, small for gestational age at

Citation: Climate change could be impacting Australian babies' birthweight for gestational age (2024, January 8) retrieved 28 April 2024 from <https://medicalxpress.com/news/2024-01-climate-impacting-australian-babies-birthweight.html>

This document is subject to copyright. Apart from any fair dealing for the purpose of private study or research, no part may be reproduced without the written permission. The content is provided for information purposes only.