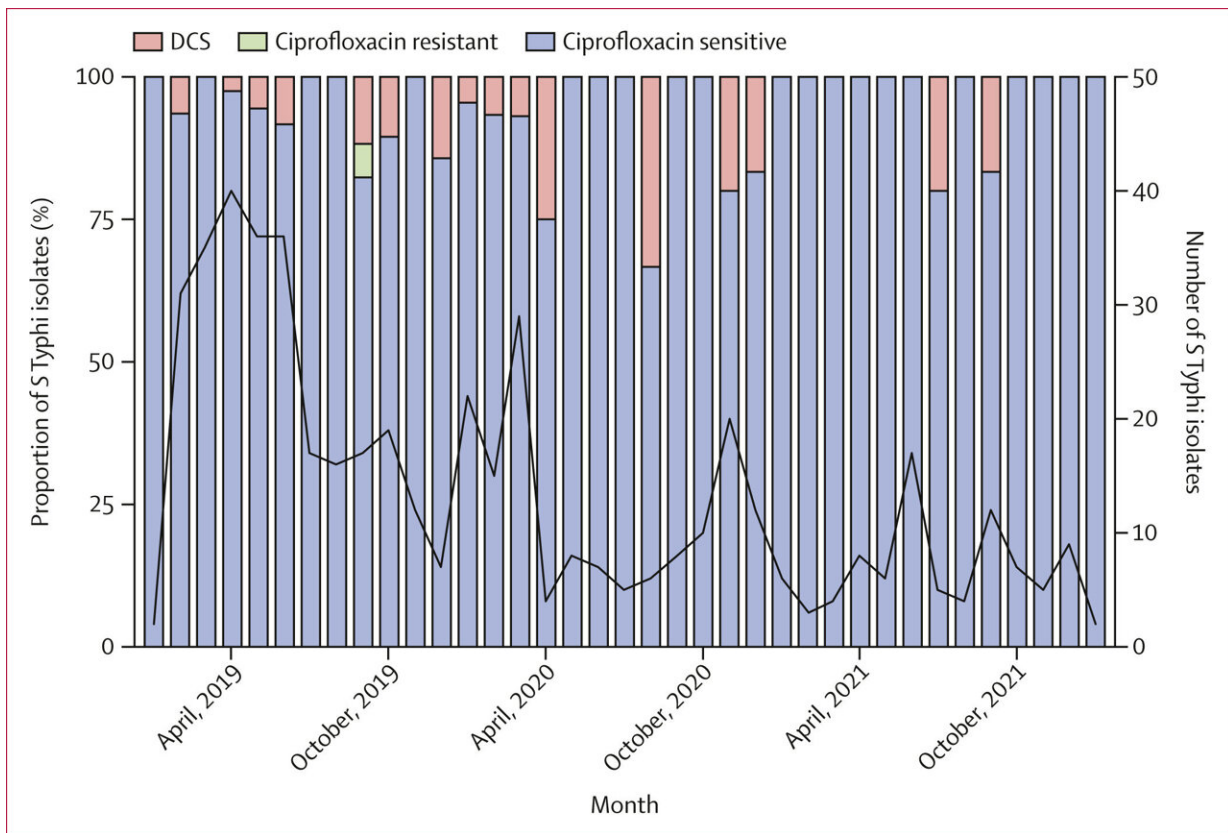


Study identifies increase in antibiotic-resistant typhoid

February 20 2024



Ciprofloxacin-sensitive, DCS, or ciprofloxacin-resistant phenotypes among S Typhi isolated from Queen Elizabeth Central Hospital, by month. Ciprofloxacin susceptibility phenotypes were determined by minimum inhibitory concentrations: sensitive $\leq 0.06 \mu\text{g/mL}$; DCS $\geq 0.12 \mu\text{g/mL}$ to

Citation: Study identifies increase in antibiotic-resistant typhoid (2024, February 20) retrieved 27 April 2024 from <https://medicalxpress.com/news/2024-02-antibiotic-resistant-typhoid.html>

This document is subject to copyright. Apart from any fair dealing for the purpose of private study or research, no part may be reproduced without the written permission. The content is provided for information purposes only.