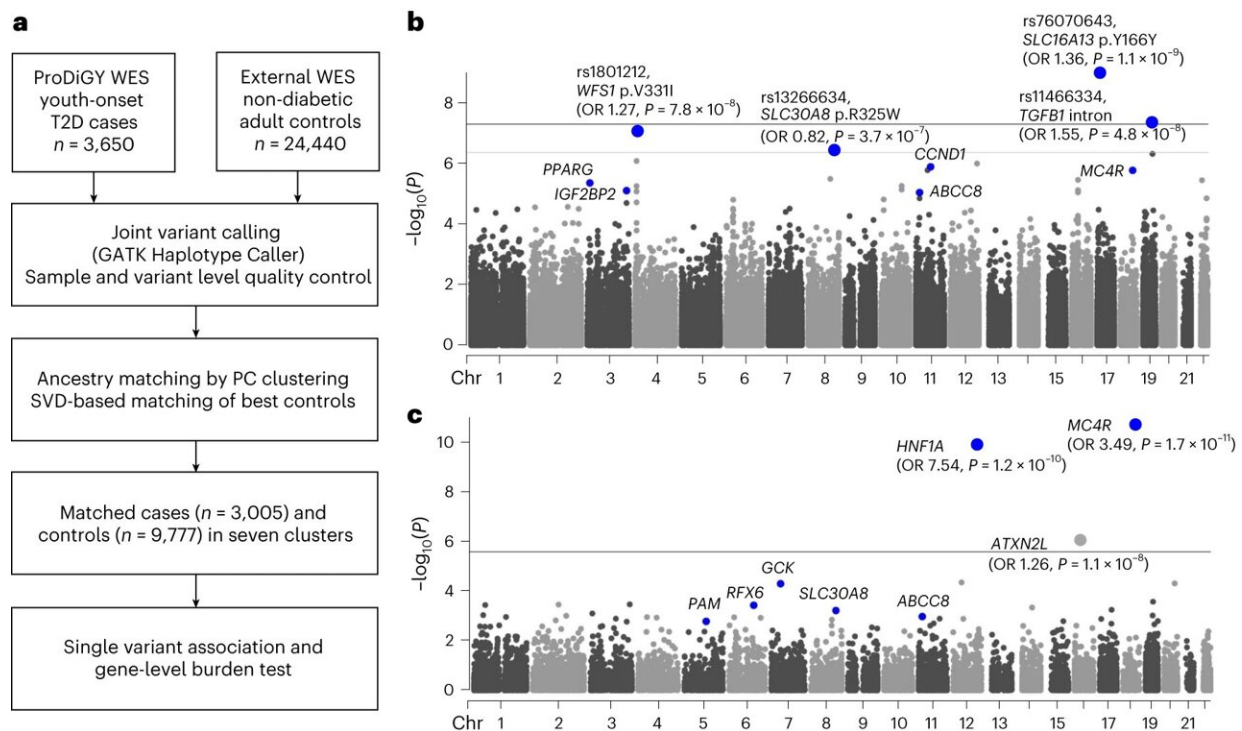


Study finds youth-onset diabetes is a genetically distinct form of the disorder

February 19 2024, by Claire Hendershot



Scheme of the study and genetic discovery. **a**, Whole-exome sequence data of individuals with youth-onset T2D were matched to those of external non-diabetic control participants using genetic principal components and a singular-value decomposition (SVD)-based method resulting in 3,005 cases and 9,777 control participants for single-variant and gene-level association analysis. **b**, Single-variant association analysis revealed four variants passing exome-wide significance (P

Citation: Study finds youth-onset diabetes is a genetically distinct form of the disorder (2024,

February 19) retrieved 29 April 2024 from <https://medicalxpress.com/news/2024-02-youth-onset-diabetes-genetically-distinct.html>

This document is subject to copyright. Apart from any fair dealing for the purpose of private study or research, no part may be reproduced without the written permission. The content is provided for information purposes only.