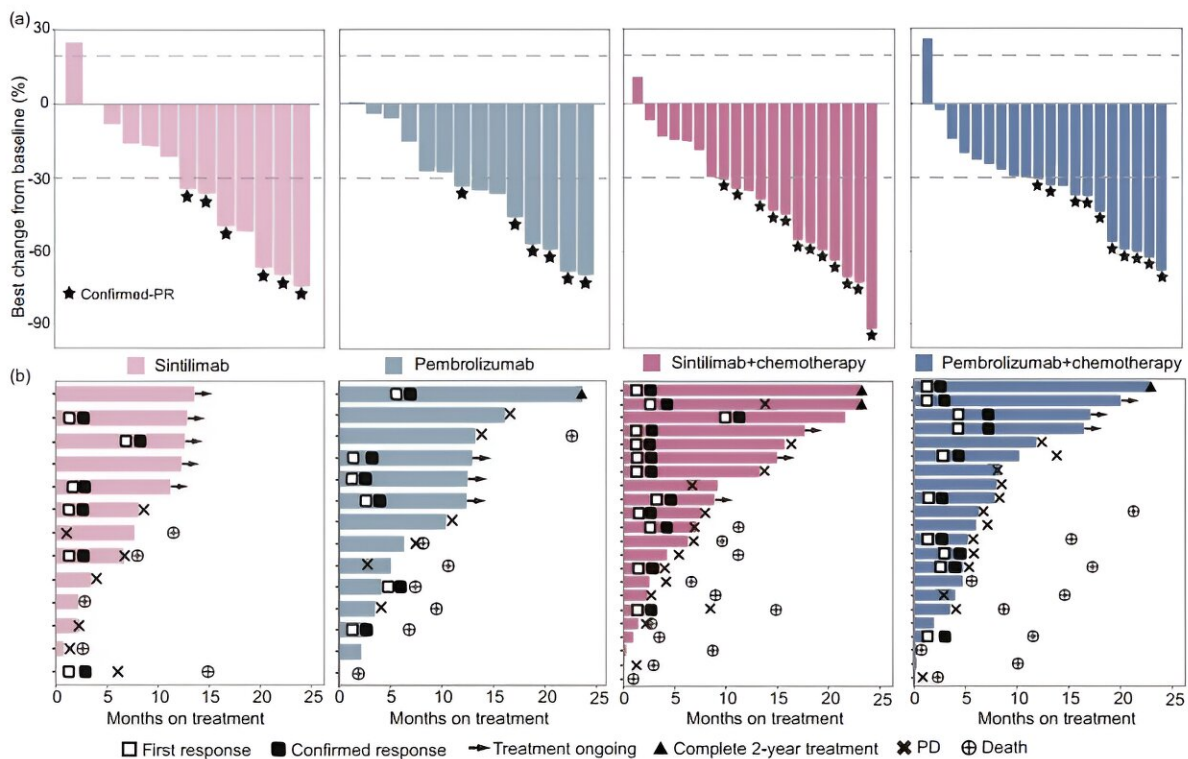


# PD-L1 expression guidance on sintilimab vs. pembrolizumab with/without chemotherapy in untreated patients

March 5 2024



The best change in target lesion size and treatment duration for all patients are illustrated in waterfall and swimmer plots. Credit: Science China Press

A study [published](#) in the journal *Science Bulletin* was led by Yi-Long Wu (Guangdong Lung Cancer Institute, Guangdong Provincial People's

Hospital, Chinese Thoracic Oncology Group (CTONG)).

In this open-label, phase 2 study (NCT04252365), patients with advanced NSCLC without EGFR or ALK alterations were randomized (1:1) to receive sintilimab or pembrolizumab monotherapy (PD-L1 TPS  $\geq 50\%$ ), or sintilimab or pembrolizumab plus [platinum-based chemotherapy](#) (PD-L1 TPS

Citation: PD-L1 expression guidance on sintilimab vs. pembrolizumab with/without chemotherapy in untreated patients (2024, March 5) retrieved 28 April 2024 from <https://medicalxpress.com/news/2024-03-pd-l1-guidance-sintilimab-pembrolizumab.html>

This document is subject to copyright. Apart from any fair dealing for the purpose of private study or research, no part may be reproduced without the written permission. The content is provided for information purposes only.