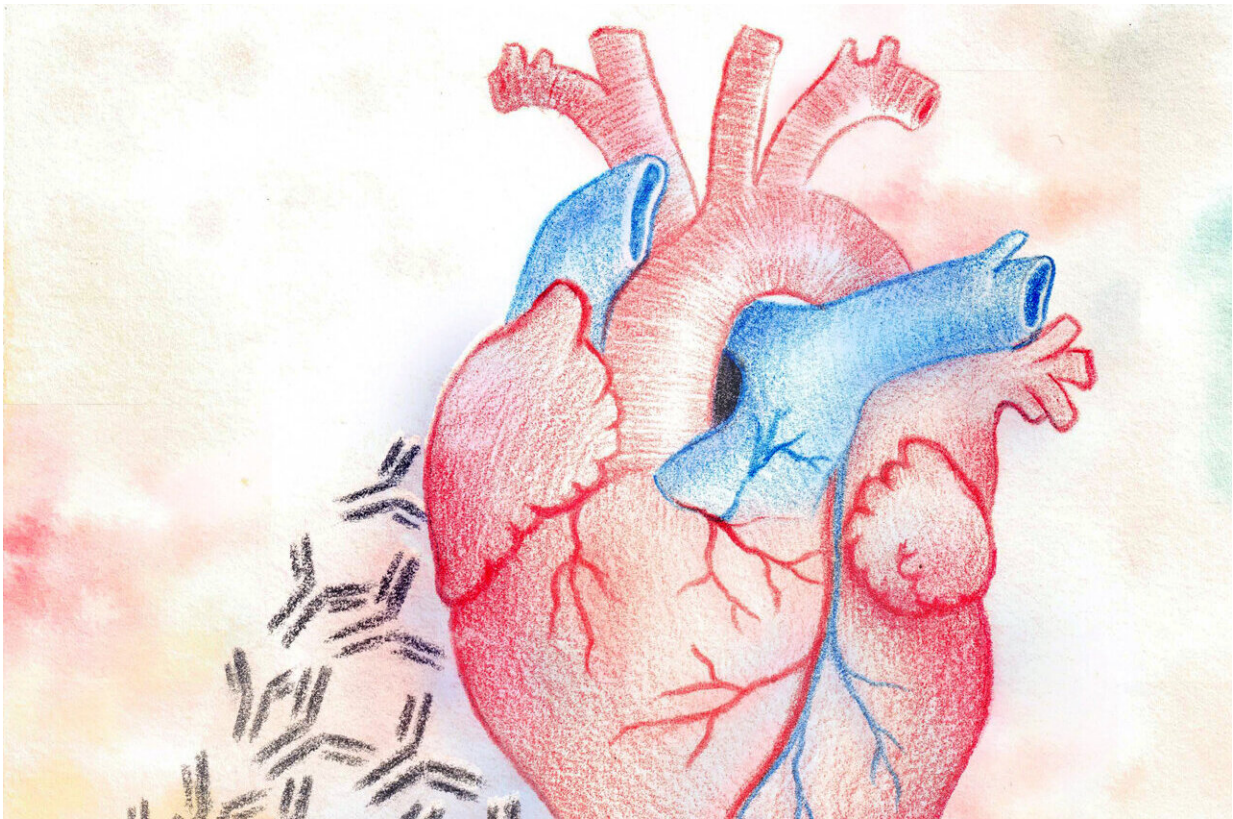


Tiny killers: How autoantibodies attack the heart in lupus patients

August 20 2024



Autoantibodies attacking the heart in lupus patients. Credit: Xiaokan Zhang/Vunkak-Novakovic Lab

Cardiovascular disease is the leading cause of death in patients suffering from lupus, an autoimmune disease in which our immune system attacks

our own tissues and organs, the heart, blood, lung, joints, brain, and skin. Lupus myocarditis—inflammation of the heart muscle—can be very serious because the inflammation alters the regularity of the rhythm and strength of the heartbeat. However, the mechanisms underlying this complex disease are poorly understood and difficult to study.

A long-standing question about lupus is why some patients develop myocarditis while others remain unaffected. And why the [clinical manifestations](#) of affected patients range so dramatically, from no symptoms at all to severe heart failure. Lupus is characterized by a large number of autoantibodies, immune proteins that mistakenly target a person's own tissues or organs, with different specificities for various molecules. Like our genes, they may explain why different individuals experience different symptoms.

Researchers have long suspected that specific autoantibody signatures could hold the key to the puzzling clinical variations they observe in lupus patients. Thus far, identifying autoantibodies involved in heart damage has been incredibly challenging due to the lack of experimental models that can replicate the cardiac disease in lupus patients. The currently used animal models fall short because of differences in cardiac physiology, while human cell cultures simply cannot capture the complexity and function of the human heart.

Study shows that autoantibodies can directly affect heart disease in lupus patient

In a new study, [published](#) August 15 in *Nature Cardiovascular Research*, a team of researchers from Columbia Engineering, Columbia University Vagelos College of Physicians and Surgeons, and Harvard University report that autoantibodies alone directly affect heart function in lupus patients.

The researchers engineered millimeter-sized cardiac tissues from healthy adult human stem cells, matured them using metabolic and electromechanical signals, and then incubated them with the autoantibodies found in the blood of lupus patients with and without myocarditis.

The team found that the binding patterns of the patients' autoantibodies to heart tissue depend on the type and severity of their myocardial damage. A subset of patients with severe myocarditis had unique autoantibody populations that primarily targeted dying cardiac cells, whereas patients with weakened heart pump function had autoantibodies that mostly targeted the surface of live cells.

Interestingly, the team discovered that the autoantibodies that were binding to live cardiac cells were able to exert potent biological effects on the tissues in the absence of immune cells, revealing potentially new mechanisms that could contribute to heart failure in lupus patients.

The study also identified four such autoantibodies that may directly affect the heart muscle. These findings may help identify lupus patients with the greatest risk of developing heart disease, inform the development of new therapeutic strategies, and allow extension to other autoimmune diseases.

"This finding is the first demonstration that autoantibodies can directly mediate myocardial injury in this complex autoimmune disease," said the team's leader Gordana Vunjak-Novakovic, University Professor and the Mikati Foundation Professor of Biomedical Engineering, Medical Sciences, and Dental Medicine at Columbia.

"It's astounding that these tiny heart tissues we've engineered using human stem cells and 'organs-on-chip' technology have the ability to emulate organ-level functions in a patient-specific way, and for such a

complex disease. We now live in the era of studying the progression and treatment of diseases using apparently simple yet highly controllable and predictive models of human organs. It feels like living in the future."

Engineers and clinicians use collaborative approach

Vunjak-Novakovic, a bioengineer renowned for her pioneering work in engineering functional human tissue for use in regenerative medicine, and her group have spent three decades working on modeling heart injury and disease and engineering tissues to combat them. For this study, the bioengineers teamed up with two physicians, Robert Winchester and Laura Geraldino-Pardilla, both rheumatologists at NewYork-Presbyterian/Columbia University Irving Medical Center.

The physicians provided blood samples containing lupus autoantibodies and detailed clinical data for the cohort of lupus patients. This enabled the Columbia Engineering team to assess the effects of patient-specific autoantibodies on heart function using engineered heart tissues and to correlate these effects to clinical symptoms.

"Myocarditis can be a diagnostically elusive and sometimes clinically ominous feature of lupus. The development of this functional mature cardiac tissue model is already opening multiple new pathways to advance our understanding and ultimately clinical management of this enigmatic autoimmune process," Winchester noted.

To learn more about the potential therapeutic targets, Vunjak-Novakovic's team also worked closely with Drs Christine and Jonathan Seidman from Harvard University. The team is now exploring ways to use their findings to better understand the underlying mechanisms of cardiac disease in lupus patients and to improve diagnostics and treatment of this complex and challenging disease.

"What's really cool about this study is that by leveraging our expertise in engineering and stem cells to develop models of the human heart, we were able to take an innovative approach to solving long-standing questions surrounding [heart disease](#) in lupus patients," said the study's first author Sharon Fleischer, who is a postdoc in Vunjak-Novakovic's lab. "The new framework we established in this study to investigate autoantibody interactions with human organs opens up unparalleled opportunities for understanding organ damage, not just in lupus but across a spectrum of autoimmune diseases."

"It was wonderful to be part of such a collaborative team that included engineers, physicians, and biologists working together to investigate a challenging clinical problem," said Trevor Nash, one of the study's co-first authors who is a recent graduate from the Vunjak-Novakovic lab and a MD/Ph.D. candidate in the Medical Scientist Training Program at the Vagelos College of Physicians and Surgeons.

More information: An engineered human cardiac tissue model reveals contributions of systemic lupus erythematosus autoantibodies to myocardial injury, *Nature Cardiovascular Research* (2024). [DOI: 10.1038/s44161-024-00525-w](https://doi.org/10.1038/s44161-024-00525-w).
www.nature.com/articles/s44161-024-00525-w

Provided by Columbia University School of Engineering and Applied Science

Citation: Tiny killers: How autoantibodies attack the heart in lupus patients (2024, August 20) retrieved 20 August 2024 from <https://medicalxpress.com/news/2024-08-tiny-killers-autoantibodies-heart-lupus.html>

This document is subject to copyright. Apart from any fair dealing for the purpose of private

study or research, no part may be reproduced without the written permission. The content is provided for information purposes only.