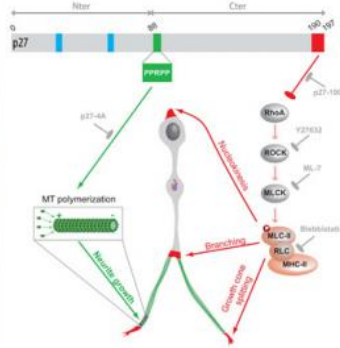
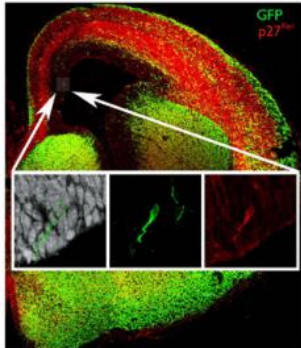


Cortex development depends on a protein

2 October 2012



are required for proper tangential migration of interneurons in the cortex".

It is worth noting that microtubules are ubiquitous components of the cytoskeleton that contribute to cell integrity as well as [cell migration](#) and cell division. These cellular processes are impaired in various neurological disorders as well as in most cancers. "Our results are of particular significance because they demonstrate for the first time that p27 is a microtubule-associated protein that promotes their polymerisation", says researcher Laurent Nguyen.

Overall, these results increase our understanding of the mechanisms that drive [neuronal migration](#) in the [cerebral cortex](#). Disruption of neuronal migration is associated with various neurological disorders characterized by mental retardation, epilepsy, learning disabilities, or autism.

As outlined in a study published in *Developmental Cell*, researchers have discovered a novel function for p27 in the control of interneuron migration in the developing cerebral cortex.

The cerebral cortex is one of the most intricate regions of the brain whose formation requires the migration and integration of two classes of neurons: the projection neurons and the [interneurons](#). These neurons are born in different places and use distinct migration modes to reach the cortex. While several signaling pathways involving various molecules have already been associated with projection neuron migration, the molecular mechanisms that control interneurons migration remain elusive.

In this study, researchers unveiled a novel activity of p27—a protein initially described for its activity as cell cycle regulator—in dynamic remodelling of the cell skeleton. This skeleton, named cytoskeleton, underlies tangential migration of interneurons in the cerebral cortex. Juliette Godin, primary researcher states: " At the molecular level, p27 acts on two cytoskeletal components, the actin and the microtubules. It promotes nucleokinesis and branching of the [growth cone](#) through regulation of actine. In addition, it promotes microtubule polymerisation in extending neurites. Both activities

More information: "p27Kip1 Is a Microtubule-Associated Protein that Promotes Microtubule Polymerization during Neuron Migration", *Developmental Cell* (Advanced Online Publication 27/09/2012) - [doi: 10.1016/j.devcel.2012.08.006](https://doi.org/10.1016/j.devcel.2012.08.006)

Provided by Universite de Liege

APA citation: Cortex development depends on a protein (2012, October 2) retrieved 16 October 2021 from <https://medicalxpress.com/news/2012-10-cortex-protein.html>

This document is subject to copyright. Apart from any fair dealing for the purpose of private study or research, no part may be reproduced without the written permission. The content is provided for information purposes only.