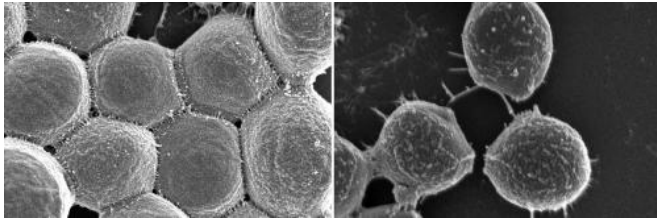


# Production of exceptionally large surface protein prevents bacteria from forming clumps

6 February 2014



Images taken with a scanning electron microscope show wild-type bacteria (left) forming tight aggregates or clumps in the presence of blood proteins. In contrast, cells of the mutant strain (right) over produce a giant surface protein, have a spiky appearance, and do not clump tightly together. This clumping defect makes the mutant strain less deadly in an experimental model of the serious staph infection, endocarditis. Credit: Alexander Horswill, University of Iowa

A genetic mechanism that controls the production of a large spike-like protein on the surface of *Staphylococcus aureus* (staph) bacteria alters the ability of the bacteria to form clumps and to cause disease, according to a new University of Iowa study.

The new study is the first to link this [genetic mechanism](#) to the production of the giant [surface protein](#) and to clumping behavior in bacteria. It is also the first time that clumping behavior has been associated with endocarditis, a serious infection of heart valves that kills 20,000 Americans each year. The findings were published in the Dec. 2103 issue of the journal *PLOS Pathogens*.

Under normal conditions, staph bacteria interact with proteins in human blood to form aggregates, or clumps. This clumping behavior has been associated with pathogenesis—the ability of bacteria to cause disease. However, the

mechanisms that control clumping are not well understood.

In the process of investigating how staph bacteria regulate cell-to-cell interactions, researchers at the UI Carver College of Medicine discovered a mutant strain of staph that does not clump at all in the presence of blood proteins.

Further investigation revealed that the clumping defect is due to disruption of a genetic signaling mechanism used by bacteria to sense and respond to their environment. The study shows that when the mechanism is disrupted, the giant surface protein is overproduced—giving the cells a spiny, or "porcupine-like" appearance—and the bacteria lose their ability to form clumps.

Importantly, the researchers led by Alexander Horswill, PhD, associate professor of microbiology, found that this clumping defect also makes the bacteria less dangerous in an [experimental model](#) of the serious [staph infection](#), endocarditis.

Specifically, the team showed that wild type bacteria cause much larger vegetations (aggregates of bacteria) on the heart valves and are more deadly than the mutant bacteria, which are unable to form clumps. The experimental model of the disease was a good parallel to the team's test tube experiments.

"The mutant bacteria that don't clump in [test tube experiments](#), don't form vegetations on the heart valves," Horswill explains.

The team then created a version of the [mutant bacteria](#) that was also unable to make the giant surface protein. This strain regained the ability of form [clumps](#) and also partially regained its ability to cause disease, suggesting that the surface protein

is at least partly responsible for both preventing clump formation and for reducing pathogenesis.

"Our study suggests that clumping could be a target for therapy," says Horswill. "If we could find drugs that block clumping, I think they would be potentially really useful for blocking staph infections."

Staph bacteria are the most significant cause of serious infectious disease in the United States, according to the Centers for Disease Control and Prevention (CDC). The [bacteria](#) are responsible for life-threatening conditions, including endocarditis, pneumonia, toxic shock, and sepsis. A better understanding of how [staph bacteria](#) causes disease may help improve treatment.

The team is now using screening methods to find small molecules that can block clumping. Such molecules will allow the researchers to investigate the clumping mechanism more thoroughly and may also point to therapies that might reduce the illness caused by staph infections.

**More information:** *PLOS Pathogens* [DOI: 10.1371/journal.ppat.1003819](#)

Provided by University of Iowa

APA citation: Production of exceptionally large surface protein prevents bacteria from forming clumps (2014, February 6) retrieved 16 September 2019 from <https://medicalxpress.com/news/2014-02-production-exceptionally-large-surface-protein.html>

*This document is subject to copyright. Apart from any fair dealing for the purpose of private study or research, no part may be reproduced without the written permission. The content is provided for information purposes only.*