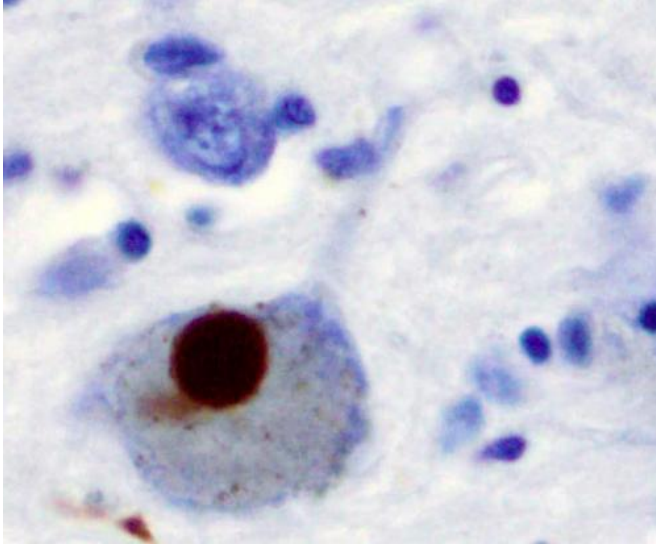


Parkinson's disease may begin in the gut

23 June 2015



Immunohistochemistry for alpha-synuclein showing positive staining (brown) of an intraneuronal Lewy-body in the Substantia nigra in Parkinson's disease. Credit: Wikipedia

The chronic neurodegenerative Parkinson's disease affects an increasing number of people. However, scientists still do not know why some people develop Parkinson's disease. Now researchers from Aarhus University and Aarhus University Hospital have taken an important step towards a better understanding of the disease.

New research indicates that Parkinson's disease may begin in the [gastrointestinal tract](#) and spread through the vagus [nerve](#) to the brain.

"We have conducted a registry study of almost 15,000 [patients](#) who have had the vagus nerve in their stomach severed. Between approximately 1970-1995 this procedure was a very common method of ulcer treatment. If it really is correct that Parkinson's starts in the gut and spreads through the vagus nerve, then these vagotomy patients should naturally be protected against developing Parkinson's disease," explains postdoc at Aarhus

University Elisabeth Svensson on the hypothesis behind the study.

A hypothesis that turned out to be correct:

"Our study shows that patients who have had the the entire vagus nerve severed were protected against Parkinson's disease. Their risk was halved after 20 years. However, patients who had only had a small part of the vagus nerve severed where not protected. This also fits the hypothesis that the disease process is strongly dependent on a fully or partially intact vagus nerve to be able to reach and affect the brain," she says.

The research project has just been published in the internationally recognised journal *Annals of Neurology*.

The first clinical examination

The research has presented strong evidence that Parkinson's disease begins in the gastrointestinal tract and spreads via the vagus nerve to the brain. Many patients have also suffered from gastrointestinal symptoms before the Parkinson's diagnosis is made.

"Patients with Parkinson's disease are often constipated many years before they receive the diagnosis, which may be an early marker of the link between neurologic and gastroenterologic pathology related to the vagus nerve ," says Elisabeth Svensson.

Previous hypotheses about the relationship between Parkinson's and the vagus nerve have led to animal studies and cell studies in the field. However, the current study is the first and largest epidemiological study in humans.

The research project is an important piece of the puzzle in terms of the causes of the disease. In the future the researchers expect to be able to use the new knowledge to identify risk factors for Parkinson's disease and thus prevent the disease.

"Now that we have found an association between the vagus nerve and the development of Parkinson's disease, it is important to carry out research into the factors that may trigger this neurological degeneration, so that we can prevent the development of the disease. To be able to do this will naturally be a major breakthrough," says Elisabeth Svensson.

More information: *Annals of Neurology*,
[onlinelibrary.wiley.com/doi/10...
2/ana.24448/abstract](https://onlinelibrary.wiley.com/doi/10.1002/ana.24448/abstract)

Provided by Aarhus University

APA citation: Parkinson's disease may begin in the gut (2015, June 23) retrieved 27 January 2021 from <https://medicalxpress.com/news/2015-06-parkinson-disease-gut.html>

This document is subject to copyright. Apart from any fair dealing for the purpose of private study or research, no part may be reproduced without the written permission. The content is provided for information purposes only.