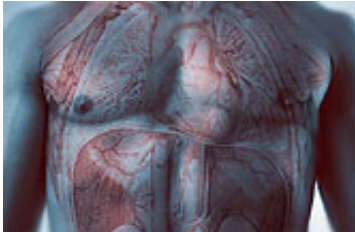


# Beetroot juice supplementation may help lengthen workouts

28 July 2015



given workload for a longer period of time before the onset of fatigue," the authors write.

**More information:** [Full Text \(subscription or payment may be required\)](#)

Copyright © 2015 [HealthDay](#). All rights reserved.

(HealthDay)—Chronic supplementation with beetroot juice (BRJ), containing nitrate, has beneficial effects on the work of the heart in response to exercise, according to a study published online June 17 in the *American Journal of Physiology: Regulatory, Integrative and Comparative Physiology*.

Jae-Seok Lee, from Kyung Hee University in South Korea, and colleagues examined the effects of chronic supplementation with BRJ on cardiac output (CO), blood pressure (BP), total peripheral resistance (TPR), and the work of the heart in response to dynamic exercise. The effects of 15 days of BRJ and nitrate-depleted [beetroot juice](#) (NDBRJ) supplementation were compared in 14 healthy males.

The researchers observed an increase in plasma nitrogen oxides with BJR supplementation. BJR also correlated with a reduction in systolic BP, diastolic BP, mean arterial pressure, and TPR at rest and during exercise, compared with NDBRJ. There was also a decrease in rate pressure product during exercise, and an increase in CO at rest and the 30 percent workload (P

"These findings suggest that BRJ can act as a dietary ergogenic supplement capable of enhancing oxygen delivery and reducing work of the heart, allowing [exercise](#) to be performed at a

APA citation: Beetroot juice supplementation may help lengthen workouts (2015, July 28) retrieved 22 January 2022 from <https://medicalxpress.com/news/2015-07-beetroot-juice-supplementation-lengthen-workouts.html>

*This document is subject to copyright. Apart from any fair dealing for the purpose of private study or research, no part may be reproduced without the written permission. The content is provided for information purposes only.*