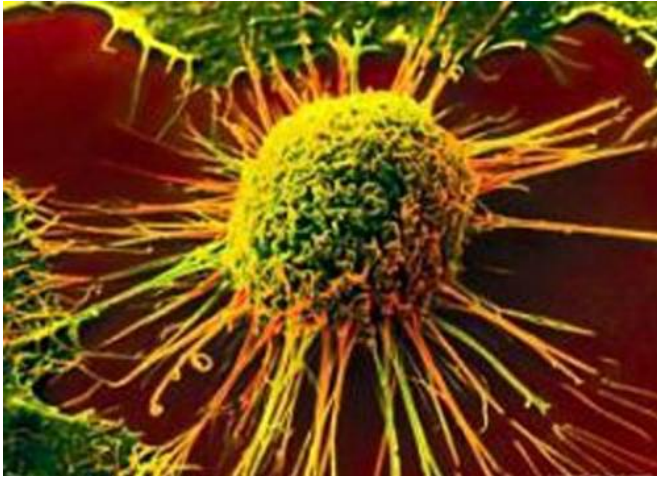


Research explains limits of cancer immunotherapy drugs

26 October 2015



author Weiping Zou, M.D., Ph.D.

"If we can reprogram this epigenetic mechanism, then the therapy might work for more patients," says Zou, Charles B. de Nancrede Professor of Surgery, Immunology and Biology at the University of Michigan Medical School.

Zou's group was the first to show PD-L1 expression, regulation and functional blockade in [dendritic cells](#) in the human cancer microenvironment.

In this study, published in *Nature*, researchers studied human and mouse models of [ovarian cancer cells](#). They applied epigenetic drugs and found that the numbers of T [cells](#) in the tumor increased. They also saw that the epigenetic drugs synergized the anti-tumor effect of PD-L1 blockade in their models.

"We hope this could be developed into a clinical trial testing a combination of PD-L1 and PD-1 blockade with epigenetic therapy. We want to see if we can make the responders more responsive and turn the non-responders into responders," Zou says.

More information: *Nature*, "Epigenetic silencing of Th1 type chemokines shapes tumor immunity and immunotherapy," published online Oct. 26, 2015. [DOI: 10.1038/nature15520](https://doi.org/10.1038/nature15520)

Immunotherapy treatments have proven wildly successful in treating some patients with cancer. But despite this success, the majority of patients do not respond to the treatments.

A new study from the University of Michigan Comprehensive Cancer Center reveals molecular changes within the tumor that are preventing the immunotherapy drugs from killing off the [cancer](#).

Clinical trials with PD-L1 and PD-1 blockade suggested that tumors with a high number of inflammation-causing T cells were more responsive to the immunotherapy-based PD-L1 and PD-1 inhibitors. Tumors with low inflammation, or low T cells, were less responsive. But what controls T cells in the tumor microenvironment is poorly understood.

"We defined a molecular mechanism to explain why some tumors are inflamed and others are not - and consequently why some [patients](#) will be responsive to therapy and others not," says senior

Provided by University of Michigan Health System

APA citation: Research explains limits of cancer immunotherapy drugs (2015, October 26) retrieved 16 June 2021 from <https://medicalxpress.com/news/2015-10-limits-cancer-immunotherapy-drugs.html>

This document is subject to copyright. Apart from any fair dealing for the purpose of private study or research, no part may be reproduced without the written permission. The content is provided for information purposes only.