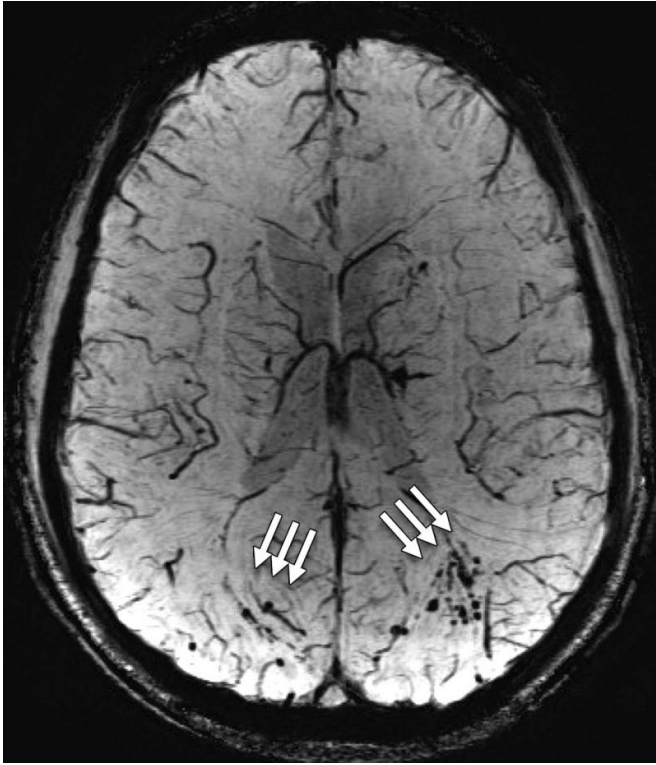


# MRI shows 'brain scars' in military personnel with blast-related concussion

15 December 2015



Susceptibility-weighted image shows extensive microhemorrhage (arrows) consistent with diffuse axonal injury -- a brain injury in which damage in the form of extensive lesions in white matter tracts occurs over a widespread area -- in a 25-year-old man with blast-related mild TBI. Credit: Radiological Society of North America (RSNA)

MRI shows brain damage in a surprisingly high percentage of active duty military personnel who suffered blast-related mild traumatic brain injury (MTBI), according to a new study appearing online in the journal *Radiology*.

MTBI, sometimes referred to as a concussion, is very common among U.S. service members returning from conflicts in Iraq and Afghanistan. More than 300,000 service members have been

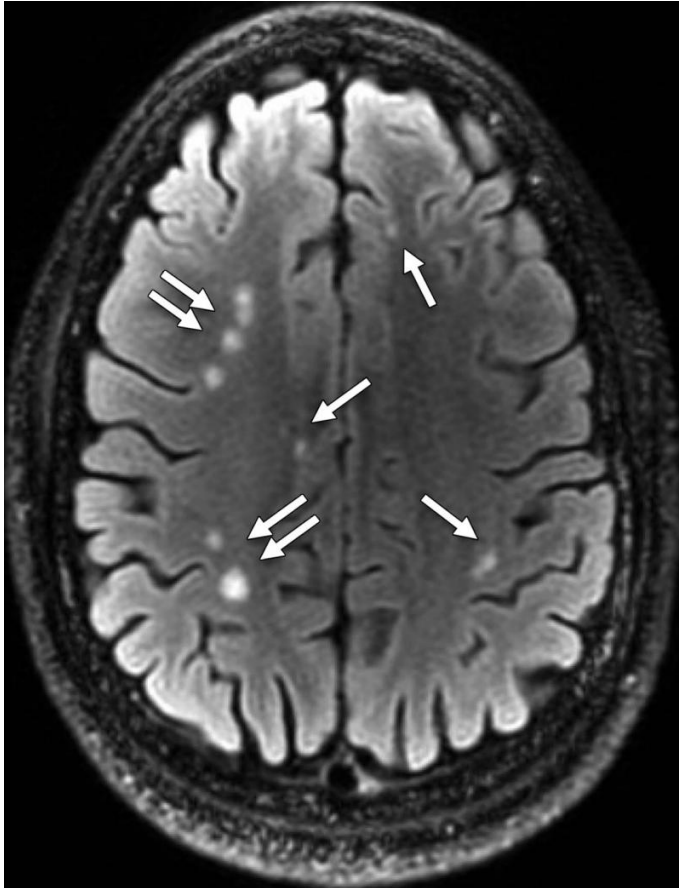
diagnosed with MTBI between 2000 and 2015, according to the Armed Forces Health Surveillance Center.

Current assessment of MTBI relies heavily on behavioral observations and on patient recall of events, such as post-traumatic amnesia and loss of consciousness. The need for a more definitive marker spurred Gerard Riedy, M.D., Ph.D., from the National Intrepid Center of Excellence (NICoE) at the Walter Reed National Military Medical Center in Bethesda, Md., to look at advanced [brain](#) imaging with MRI as a tool for assessing MTBI.

"Working at Walter Reed, I saw people with MTBI get routine brain scans and I thought we could do better," Dr. Riedy said.

In what represents the largest study using advanced brain imaging of active military ever performed, Dr. Riedy and colleagues used MRI to study 834 military service members with MTBI related to blast injuries. Slightly more than 84 percent of the patients reported one or more blast-related incidents, and 63 percent reported loss of consciousness at the time of injury.

The MRI scans revealed the presence of white matter T2 hyperintensities, which can be thought of as brain scars, in 52 percent of the MTBI patients.



Axial T2 FLAIR image shows multiple white matter T2-weighted hyperintense areas (arrows) in a 28-year-old man with blast-related mild TBI. This patient had a total of 76 lesions on all sections. Credit: Radiological Society of North America (RSNA)

"We were really surprised to see so much damage to the brain in the MTBI patients," Dr. Riedy said. "It's expected that people with MTBI should have normal MRI results, yet more than 50 percent had these abnormalities."

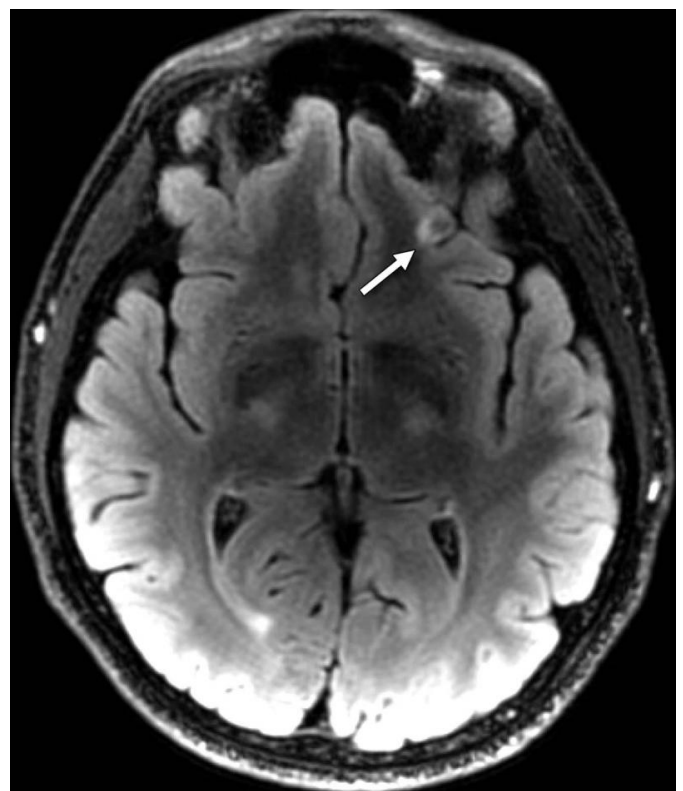
Pituitary abnormalities were identified in almost a third of MTBI patients. The pituitary, the so-called "master gland" that governs other endocrine gland functions, is located in the base of the brain. Previous research has shown a decline in pituitary function in soldiers who experienced MTBI, perhaps because of blast-related trauma.

The findings represent the first in a series of new studies from the NICoE on advanced brain imaging

in MTBI patients, according to Dr. Riedy.

"This paper is just the tip of the iceberg," he said. "We have several more papers coming up that build on these findings and look at brain function, brain wiring, connectivity and perfusion, or [brain blood flow](#)."

As the research team builds a database of advanced imaging data, they hope to begin to link the data with the more subjective symptoms associated with MTBI.



Axial T2 FLAIR image with small focus of encephalomalacia--the softening or loss of brain tissue -- and gliosis in the inferior left frontal lobe (arrow) in a 26-year-old man with blast-related mild TBI. Credit: Radiological Society of North America (RSNA)

"A scar on a brain scan is an objective finding," Dr. Riedy said. "We start with the objective and build a foundation for the correct diagnosis of MTBI and then bring in the subjective measures later."

One key area of focus is the diagnosis of post-traumatic stress disorder (PTSD), a mental health condition caused by a traumatic event or events. PTSD is challenging to diagnose. Symptoms of TBI and PTSD overlap, and treatments for one are unlikely to work for the other.

"An objective measure of [traumatic brain injury](#) can lead to proper therapies," Dr. Riedy said.

The ability to see the brain scans has already had an impact on [military personnel](#) and their families, Dr. Riedy noted, allowing them to see for the first time what has previously been called the invisible wounds of war.

"Military traumatic [brain injury](#) is not a small problem for our country," he said. "Through this research, we hope to learn more about what the future entails for our military personnel who've suffered these injuries."

Provided by Radiological Society of North America

APA citation: MRI shows 'brain scars' in military personnel with blast-related concussion (2015, December 15) retrieved 4 March 2021 from <https://medicalxpress.com/news/2015-12-mri-brain-scars-military-personnel.html>

*This document is subject to copyright. Apart from any fair dealing for the purpose of private study or research, no part may be reproduced without the written permission. The content is provided for information purposes only.*