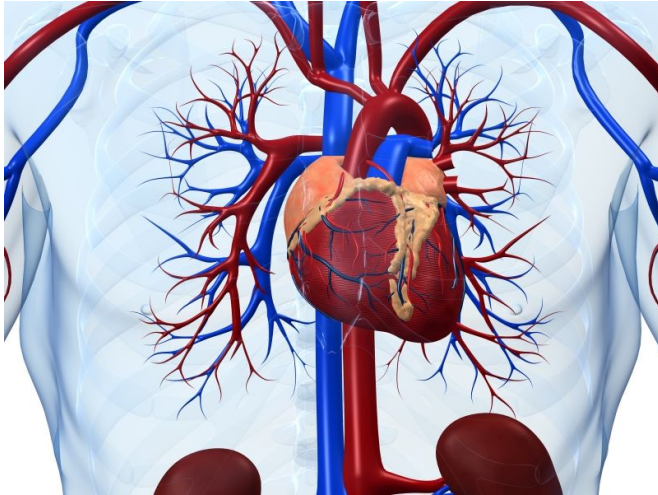


HDL-C prediction of heart disease modulated by TG, LDL-C

17 May 2016



(HealthDay)—The impact of high-density lipoprotein cholesterol (HDL-C) on cardiovascular disease (CVD) risk is modulated by triglycerides (TG) and low-density lipoprotein cholesterol (LDL-C), according to a study published online May 10 in *Circulation: Cardiovascular Quality and Outcomes*.

Jacqueline Bartlett, from the Geisel School of Medicine in Hanover, N.H., and colleagues followed 3,590 men and women from the Framingham Heart Study offspring cohort without known CVD between 1987 and 2011. If TG and LDL-C were both low (

APA citation: HDL-C prediction of heart disease modulated by TG, LDL-C (2016, May 17) retrieved 17 June 2019 from <https://medicalxpress.com/news/2016-05-hdl-c-heart-disease-modulated-tg.html>

This document is subject to copyright. Apart from any fair dealing for the purpose of private study or research, no part may be reproduced without the written permission. The content is provided for information purposes only.