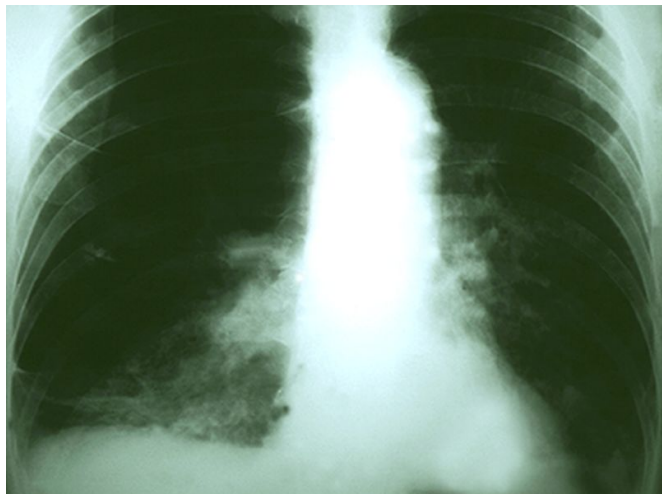


Changes in depression symptoms tied to mortality in lung cancer

7 October 2016



new-onset depression, depression symptom remission, and persistent depression. Compared with the never-depression group, the hazard ratios were 1.50 (95 percent confidence interval [CI], 1.12 to 2.01), 1.02 (95 percent CI, 0.79 to 1.31), and 1.42 (95 percent CI, 1.15 to 1.75) for new-onset depression symptoms, depression symptom remission, and persistent depression symptoms, respectively. Depression symptoms at baseline correlated with increased [mortality](#) among participants with early- but not late-stage disease.

"Among [patients](#) with [lung cancer](#), longitudinal changes in [depression](#) symptoms are associated with differences in mortality, particularly among patients with early-stage disease," the authors write.

One author disclosed financial ties to Novartis, and a second disclosed ties to UpToDate.

(HealthDay)—Longitudinal changes in depression are associated with differences in mortality among patients with lung cancer, according to a study published online Oct. 3 in the *Journal of Clinical Oncology*.

Donald R. Sullivan, from the Oregon Health & Science University in Portland, and colleagues conducted a prospective, observational study from five U.S. geographically defined regions. They examined longitudinal changes in depression using the eight-item Center for Epidemiologic Studies Depression scale, which was administered at diagnosis and 12-month follow-up, and the impact of these changes on survival.

The researchers found that 38 percent of the 1,790 participants had depression symptoms at baseline, and during treatment an additional 14 percent developed new-onset depression symptoms. Based on longitudinal changes in depression symptoms from baseline to follow-up, participants were classified into four groups: never depression,

More information: [Abstract](#)
[Full Text \(subscription or payment may be required\)](#)

Copyright © 2016 [HealthDay](#). All rights reserved.

APA citation: Changes in depression symptoms tied to mortality in lung cancer (2016, October 7)
retrieved 11 April 2021 from
<https://medicalxpress.com/news/2016-10-depression-symptoms-tied-mortality-lung.html>

This document is subject to copyright. Apart from any fair dealing for the purpose of private study or research, no part may be reproduced without the written permission. The content is provided for information purposes only.