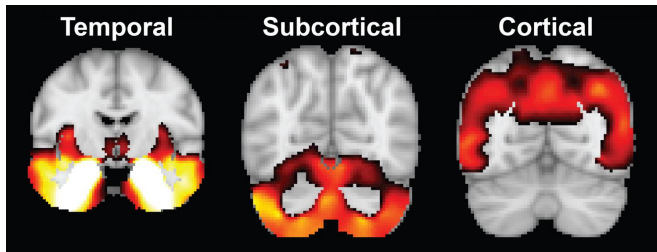


Different brain atrophy patterns may explain variability in Alzheimers disease symptoms

7 October 2016



Mathematical modeling of brain scans of patients with Alzheimer's disease and others at risk for the disorder has allowed the identification of three atrophy factor patterns, based on the loss of gray matter throughout major areas of the brain, which may help explain the variations in symptoms occurring in individual patients. Credit: Xiuming Zhang, National University of Singapore

Mathematical modeling of the brain scans of patients with Alzheimer's disease and others at risk for the devastating neurodegenerative disorder has identified specific patterns of brain atrophy that appear to be related to the loss of particular cognitive abilities. In their report that has been published online in the *Proceedings of the National Academy of Sciences*, a team of researchers at Massachusetts General Hospital (MGH) and the National University of Singapore describe how different atrophy patterns may explain the different ways that Alzheimer's disease can be manifested in individual patients.

"The symptom severity and neurodegeneration can vary widely across patients in Alzheimer's disease," says Thomas Yeo, PhD, of the Martinos Center for Biomedical Imaging at MGH. "Our work shows that participants in this study exhibit at least three atrophy patterns - cortical, temporal or subcortical - that are associated with variability in cognitive decline not only in patients diagnosed with Alzheimer's but also in individuals with mild cognitive impairment or those who are cognitively

normal but are at risk for Alzheimer's." In addition to his affiliation with the Martinos Center, Yeo is an assistant professor in the Department of Electrical and Computer Engineering, Clinical Imaging Research Centre and Singapore Institute for Neurotechnology at the National University of Singapore.

The study analyzed data collected as part of the Alzheimer's Disease Neuroimaging Initiative (ADNI), a multi-institutional project to develop biomarkers - including blood tests, cerebrospinal fluid tests, and imaging studies - that can be used for diagnosis or in clinical trials. Yeo and his team - including investigators at the MGH and in Singapore - analyzed MR images taken of the brains of 378 ADNI participants when they enrolled in the study. Of these participants, 188 had been diagnosed with Alzheimer's disease; the others - 147 with mild cognitive impairment and 43 who were cognitively normal - were at increased risk based on levels in their brains of the beta-amyloid plaques that are characteristic of the disease.

As a first step, the research team analyzed data from the baseline structural MRIs using a mathematical model that estimated the probability that particular details of each image were associated with atrophy of a specific location within the brain. Based on the location of atrophy factors, they determined three atrophy factor patterns: cortical - representing atrophy in most of the cerebral cortex; temporal - indicating atrophy in the temporal cortex (the cortical lobe behind the ears), hippocampus and amygdala; and subcortical, indicating atrophy in the cerebellum, striatum and thalamus, structures at the base of the brain.

Analysis of study participant scans taken two years later indicated that atrophy factor patterns were persistent in individuals and did not reflect different stages of disease. Most participants - including those in the [mild cognitive impairment](#) and cognitively normal groups - showed levels of more

than one atrophy factor.

disease, *Proceedings of the National Academy of Sciences* (2016). [DOI: 10.1073/pnas.1611073113](https://doi.org/10.1073/pnas.1611073113)

Behavioral and cognitive tests of study participants taken at six-month intervals indicated associations between particular atrophy factor patterns and specific cognitive deficits. Individuals in whom temporal atrophy predominated had greater problems with memory, while cortical atrophy was associated with difficulties with executive function - the ability to plan and to accomplish goals. Individual differences in how atrophy factors are distributed within the brain may allow prediction of the rate at which cognitive abilities would be expected to decline.

Provided by Massachusetts General Hospital

"Most previous studies focused on patients already diagnosed, but we were able to establish distinct atrophy patterns not only in diagnosed patients but also in at-risk participants who had mild impairment or were cognitively normal at the outset of the study," Yeo says. "That is important because the neurodegenerative cascade that leads to Alzheimer's starts years, possibly decades, before diagnosis. So understanding different atrophy patterns among at-risk individuals is quite valuable.

He adds, "Previous studies assumed that an individual can only express a single neurodegenerative pattern, which is highly restrictive since in any aged person there could be multiple pathological factors going on at the same time - such as vascular impairment along with the amyloid plaques and tau tangles that are directly associated with Alzheimer's. So individuals who are affected by multiple, co-existing pathologies might be expected to exhibit multiple atrophy patterns."

Future research could further determine whether and how these atrophy patterns relate to the distribution of amyloid and tau and the mechanisms by which they affect specific [cognitive abilities](#), Yeo explains. The same analytic approach also could be applied to other types of patient data and extended to other neurodegenerative disorder that produce varying symptom patterns, such as Parkinson's disease and autism.

More information: Xiuming Zhang et al, Bayesian model reveals latent atrophy factors with dissociable cognitive trajectories in Alzheimer's

APA citation: Different brain atrophy patterns may explain variability in Alzheimers disease symptoms (2016, October 7) retrieved 15 June 2019 from <https://medicalxpress.com/news/2016-10-brain-atrophy-patterns-variability-alzheimers.html>

This document is subject to copyright. Apart from any fair dealing for the purpose of private study or research, no part may be reproduced without the written permission. The content is provided for information purposes only.