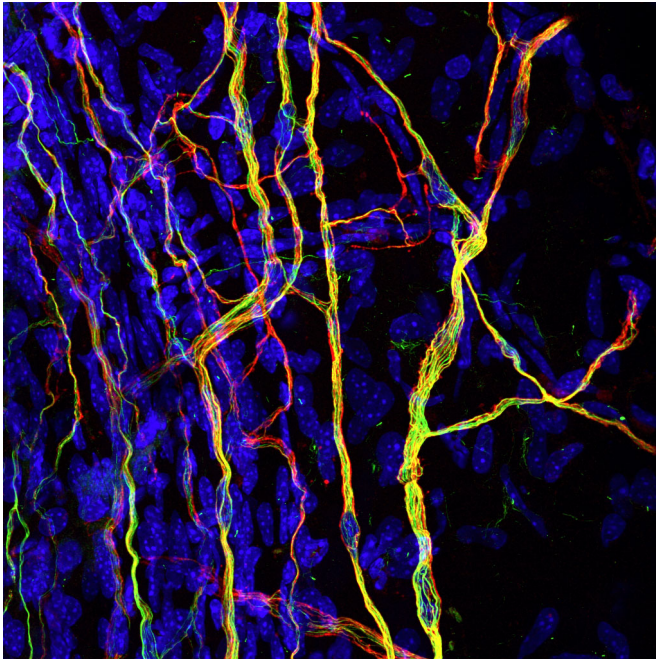


# Research on the effect of nerve cell stiffness on sensitivity to touch could lead to new painkillers

13 December 2016



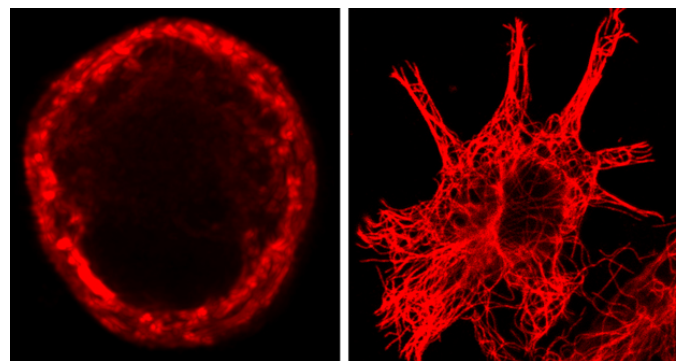
Nerve endings in the cornea, which is very sensitive to touch, have microtubules modified by Ataxin 1 (yellow).  
Credit: Laura Castaldi/EMBL

For many patients with chronic pain, any light touch - even just their clothes touching their skin - can be agony. Scientists at EMBL and the Werner Reichardt Centre for Integrative Neuroscience (CIN) of the University of Tübingen have found a possible new avenue for producing painkillers that specifically treat this kind of pain. In a study published online today in *eLife*, they discovered how the stiffness of our nerve cells influences sensitivity to touch and pain.

"Being able to stop this mechanical pain could be very powerful, and it's something that current drugs are not very good at doing," says Paul Heppenstall, who led the work at EMBL.

Whether it's a light brush or a painful poke, when something touches you, receptors on the nerves under your skin sense it and carry that information to the brain. To be more precise, those receptors detect - and respond to - the bending of the nerve cell's membrane. The EMBL scientists have now discovered a molecule which, by influencing how stiff or bendy a nerve cell is, affects how sensitive a mouse is to touch and pain.

Heppenstall and colleagues genetically engineered mice so that they could not produce a molecule called Ataxin 1. Working with Jing Hu's lab at CIN and Laura Andolfi at Istituto Officina dei Materiali-CNR, in Trieste, they found that the nerve cells in the affected mice became more stiff, and they became insensitive to [light touch](#) and to mechanical pain. This happened both when they prevented all of a mouse's cells from producing the molecule and when they did so just in the mouse's sensory neurons.



In sensory cells (left), microtubules form a ring just below the cell membrane. In other cells (right), they don't.  
Credit: Shane Morley/EMBL

The Ataxin 1 molecule is present in all cells. Scientists

know that it modifies microtubules - tiny tubes that act as transport network and scaffolding inside cells - and that this happens in all cells, especially in nerve cells. So Heppenstall, Hu and colleagues were surprised to find that the other senses seem not to be affected in the mice.

"It could be that the molecule also affects the stiffness of nerves involved in other senses, but because stiffness is not important for detecting smells or tastes, for example, changes in cell stiffness might not have a detectable effect on those senses," says Shane Morley, who carried out the work at EMBL.

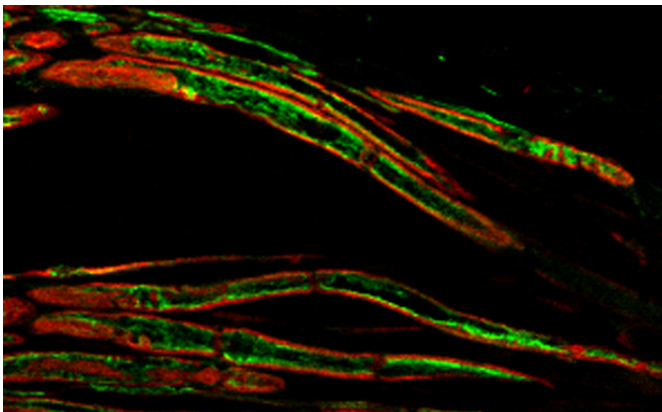
One difference that the scientists found between nerve cells that detect touch and other cells is in how their microtubules are arranged. In [sensory cells](#), they form a ring just below the cell membrane. In other cells, they don't. The scientists think that this ring probably fine-tunes how stiff or bendy a nerve cell's membrane is, influencing how sensitive that cell - and the animal in general - is to touch.

stiff nerve cells are could nevertheless be an effective way of treating that sensitivity.

"We're now looking for small [molecules](#) that interfere with this fine-tuning of cell stiffness, and which might one day be used to make painkillers specifically to treat this mechanical pain," says Heppenstall. "This is the first step in our sense of touch, so if we can stop the signal there, then we have a good chance of stopping everything which is downstream. And because only these touch-sensing [nerve cells](#) would be affected, there's hope that such a drug might not have many unwanted side-effects."

**More information:** Shane J Morley et al, Acetylated tubulin is essential for touch sensation in mice, *eLife* (2016). [DOI: 10.7554/eLife.20813](https://doi.org/10.7554/eLife.20813)

Provided by European Molecular Biology Laboratory



Microtubules (green) lie just below the membrane of sensory neurons (red), keeping the cells bendy enough to sense touch and pain. Credit: Nereo Kalebic/EMBL

The nervous system and sense of touch are similar in mice and humans, so the results likely hold true for people, too. And although problems in cell stiffness are unlikely to be at the root of most patients' hypersensitivity to touch, controlling how

APA citation: Research on the effect of nerve cell stiffness on sensitivity to touch could lead to new painkillers (2016, December 13) retrieved 15 June 2019 from <https://medicalxpress.com/news/2016-12-effect-nerve-cell-stiffness-sensitivity.html>

*This document is subject to copyright. Apart from any fair dealing for the purpose of private study or research, no part may be reproduced without the written permission. The content is provided for information purposes only.*