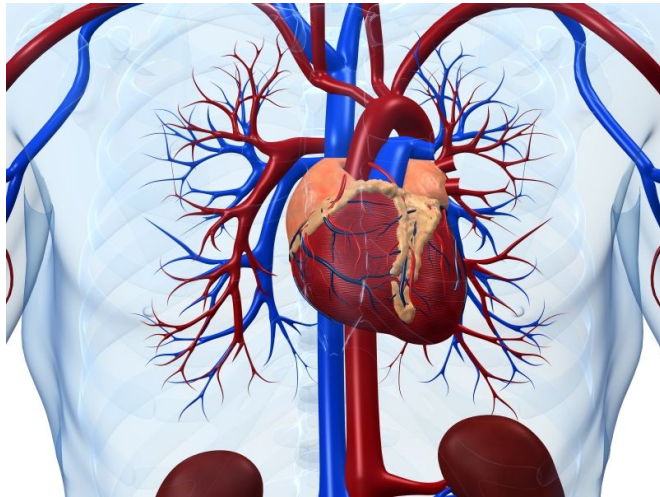


# Iron deficiency tied to worse response, remodeling after CRT

22 December 2016



(P

"In conclusion, iron deficiency is prevalent and affects both clinical response and reverse cardiac remodeling after CRT implantation," the authors write. "Moreover, it is a powerful predictor of adverse clinical outcomes in CRT."

**More information:** [Full Text](#)

Copyright © 2016 [HealthDay](#). All rights reserved.

(HealthDay)—For patients undergoing cardiac resynchronization therapy (CRT), iron deficiency is prevalent and is associated with clinical response and reverse cardiac remodeling, according to a study published in the Jan. 1 issue of *The American Journal of Cardiology*.

Pieter Martens, M.D., from Ziekenhuis Oost-Limburg in Genk, Belgium, and colleagues examined the impact of [iron deficiency](#) on [clinical response](#) and reverse cardiac remodeling and outcome after CRT in 541 [patients](#) with mean follow-up of  $38 \pm 22$  months. The authors assessed New York Heart Association functional class, reverse cardiac remodeling on echocardiography, and clinical outcome retrospectively for patients with full iron status and complete blood count available at implantation.

The researchers found that the prevalence of iron deficiency was 56 percent at implantation. Less symptomatic improvement was seen at six months after implantation for patients with iron deficiency

APA citation: Iron deficiency tied to worse response, remodeling after CRT (2016, December 22)  
retrieved 17 November 2019 from <https://medicalxpress.com/news/2016-12-iron-deficiency-tied-worse-response.html>

*This document is subject to copyright. Apart from any fair dealing for the purpose of private study or research, no part may be reproduced without the written permission. The content is provided for information purposes only.*