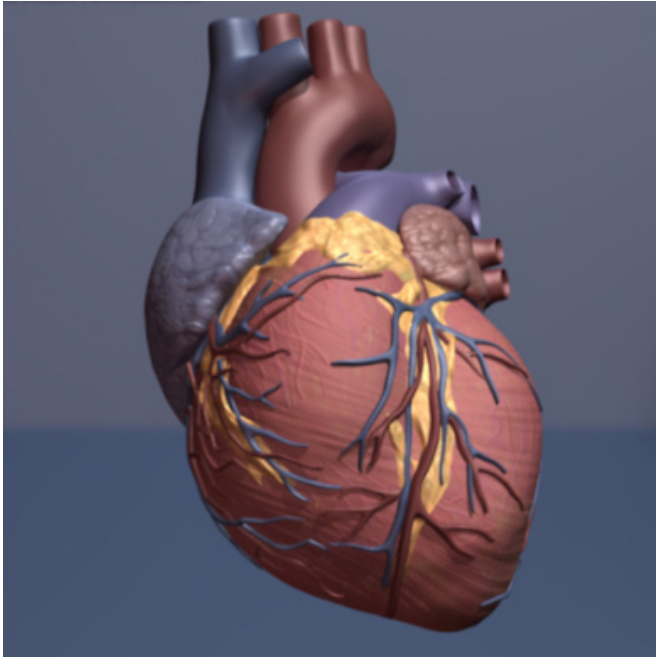


# Heart failure is as 'malignant' as some common cancers

4 May 2017



Human heart. Credit: copyright American Heart Association

devices, mortality rates for patients with heart failure remain significant and a major public health problem. Heart failure remains as malignant as many of the common cancers," said Dr. Mamas Mamas, lead author of the *European Journal of Heart Failure* study.

**More information:** Mamas A. Mamas et al, Do patients have worse outcomes in heart failure than in cancer? A primary care-based cohort study with 10-year follow-up in Scotland, *European Journal of Heart Failure* (2017). [DOI: 10.1002/ejhf.822](https://doi.org/10.1002/ejhf.822)

Provided by Wiley

A new analysis finds that, despite advances in care, men and women with a diagnosis of heart failure continue to have worse survival rates than patients with certain common cancers.

The study included 56,658 adults in Scotland who were receiving care in a primary care setting, with a total of 147,938 person-years of follow-up. In men, [heart failure](#) was linked with worse survival than prostate cancer and bladder cancer, but better survival than [lung cancer](#) and colorectal cancer. In women, heart failure was linked with worse survival than breast cancer and [colorectal cancer](#), but better survival than lung cancer and ovarian cancer.

"Our study shows that despite advances in the treatment of heart failure with newer drugs and

APA citation: Heart failure is as 'malignant' as some common cancers (2017, May 4) retrieved 25 June 2019 from <https://medicalxpress.com/news/2017-05-heart-failure-malignant-common-cancers.html>

*This document is subject to copyright. Apart from any fair dealing for the purpose of private study or research, no part may be reproduced without the written permission. The content is provided for information purposes only.*