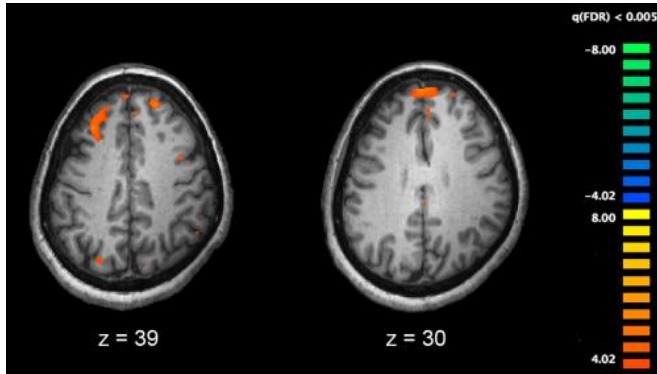


Effectiveness of antipsychotic treatments in patients with schizophrenia

7 June 2017



differences between specific antipsychotic agents and between routes of administration concerning the risk of rehospitalization and treatment failure among patients with schizophrenia," the article concludes.

More information: *JAMA Psychiatry* (2017). [DOI: 10.1001/jamapsychiatry.2017.1322](https://doi.org/10.1001/jamapsychiatry.2017.1322)

Provided by The JAMA Network Journals

Functional magnetic resonance imaging (fMRI) and other brain imaging technologies allow for the study of differences in brain activity in people diagnosed with schizophrenia. The image shows two levels of the brain, with areas that were more active in healthy controls than in schizophrenia patients shown in orange, during an fMRI study of working memory. Credit: Kim J, Matthews NL, Park S./PLoS One.

A new study published by *JAMA Psychiatry* examines the comparative effectiveness of antipsychotic treatments for the prevention of psychiatric rehospitalization and treatment failure among a nationwide group of patients with schizophrenia in Sweden.

Jari Tiihonen, M.D., Ph.D., of the Karolinska Institutet, Stockholm, Sweden, and coauthors used nationwide register-based data in their study. Nationwide databases were linked to study the risk of rehospitalization and [treatment failure](#) from 2006 to 2013 among all [patients](#) in Sweden with a schizophrenia diagnosis who were 16 to 64 years old in 2006. There were 29,823 patients in the total prevalent cohort (people who have had the condition) and 4,603 in the incident cohort of newly diagnosed patients.

"Our results suggest that there are substantial

APA citation: Effectiveness of antipsychotic treatments in patients with schizophrenia (2017, June 7) retrieved 8 December 2021 from <https://medicalxpress.com/news/2017-06-effectiveness-antipsychotic-treatments-patients-schizophrenia.html>

This document is subject to copyright. Apart from any fair dealing for the purpose of private study or research, no part may be reproduced without the written permission. The content is provided for information purposes only.