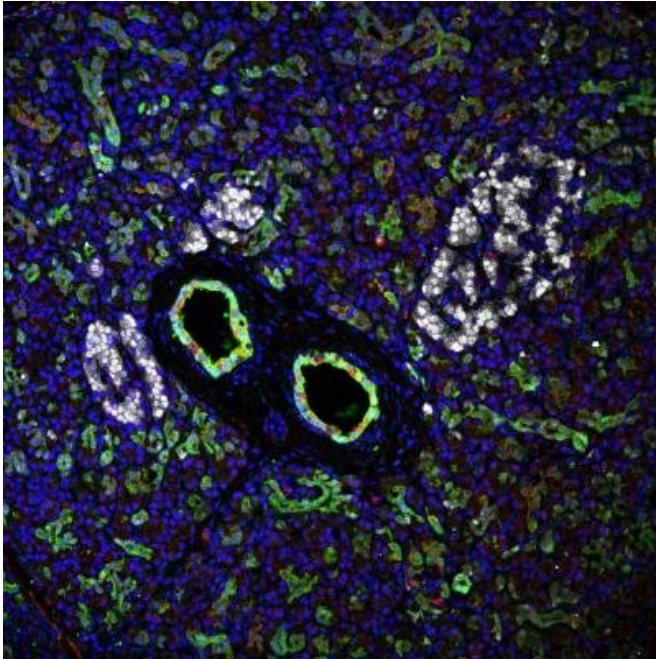


Unique pancreatic stem cells have potential to regenerate beta cells, respond to glucose

27 February 2018



Diabetes Research Institute scientists have confirmed that the unique stem cells reside within large ducts of the human pancreas. Two such ducts (green), surrounded by three islets (white) are shown. Credit: Diabetes Research Institute Foundation

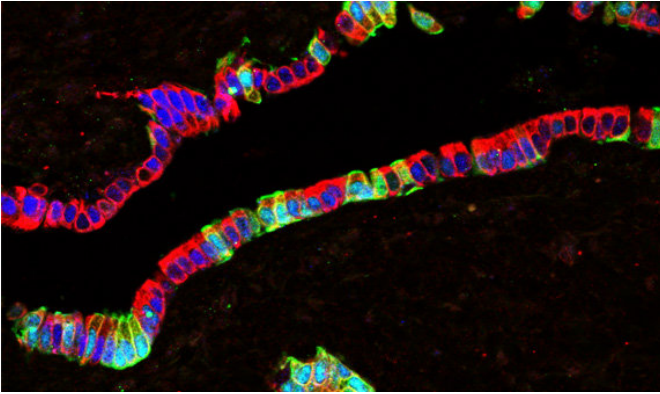
Scientists from the Diabetes Research Institute at the University of Miami Miller School of Medicine have confirmed the existence of progenitor cells within the human pancreas that can be stimulated to develop into glucose-responsive beta cells. These significant findings, published in *Cell Reports*, open the door to developing regenerative cell therapies for those living with type 1 diabetes, addressing a major challenge that stands in the way of discovering a biological cure for the disease.

The notion that the pancreas harbors [progenitor cells](#) with the potential to regenerate islets has been hypothesized for decades, but not

conclusively demonstrated. DRI scientists have now been able to identify the exact anatomic location of these stem cells and validate their proliferative potential and ability to turn into glucose-responsive beta cells.

"Our in-depth study of these pancreatic stem cells may help us tap into an endogenous cell supply 'bank' for beta cell regeneration purposes and, in the future, lead to therapeutic applications for people living with type 1 [diabetes](#)," said Juan Dominguez-Bendala, Ph.D., DRI director of pancreatic stem cell development for translational research and co-principal investigator of the study alongside Dr. Ricardo Pastori, Ph.D., director of molecular biology. "Together with our previous findings using BMP-7 to stimulate their growth, we believe that we may be able to induce these stem cells to become functional islets."

The DRI team previously reported that bone morphogenetic protein 7 (BMP-7), a naturally occurring growth factor already approved by the Food and Drug Administration (FDA) for clinical use, stimulates progenitor-like cells within cultured human non-endocrine pancreatic tissue. In the most recent study, the researchers went on to demonstrate that those stem cells that respond to BMP-7 reside within the pancreatic ductal and glandular network of the organ. Additionally, the cells are characterized by the expression of PDX1, a protein necessary for beta cell development, and ALK3, a cell surface receptor that has been associated with the regeneration of multiple tissues. Using "molecular fishing" techniques, they were able to selectively extract the cells that expressed PDX1 and ALK3, grow them in a dish and demonstrate that they can proliferate in the presence of BMP-7 and later differentiate into beta cells. Together, the combined study results may help move researchers closer to developing regenerative cell therapies for type 1, and potentially type 2, diabetes.



Human pancreatic section showing the epithelium of a large pancreatic duct harboring progenitor-like cells. These cells are characterized by expression of PDX1 (white) and the BMP-7 receptor ALK3 (red), but not the ductal marker carbonic anhydrase II (CAII, green). When sorted and cultured in defined conditions, these cells are BMP-7-expandable and exhibit multipotent differentiation potential. Credit: Diabetes Research Institute Foundation

[cells](#). In type 1 diabetes, this would require abrogation of autoimmunity to avoid immune destruction of the newly formed insulin producing [cells](#). For this reason our current efforts are converging on immune tolerance induction without the need for life long anti-rejection drugs," said Camillo Ricordi, M.D., director of the Diabetes Research Institute and Stacy Joy Goodman Professor of Surgery.

More information: Mirza Muhammad Fahd Qadir et al, P2RY1/ALK3-Expressing Cells within the Adult Human Exocrine Pancreas Are BMP-7 Expandable and Exhibit Progenitor-like Characteristics, *Cell Reports* (2018). [DOI: 10.1016/j.celrep.2018.02.006](https://doi.org/10.1016/j.celrep.2018.02.006)

Provided by Diabetes Research Institute Foundation

In type 1 diabetes, the [insulin-producing cells](#) of the pancreas have been mistakenly destroyed by the immune system, requiring patients to manage their blood sugar levels through a daily regimen of insulin therapy. In type 2 diabetes, patients are able to produce some insulin, but their beta cells may become dysfunctional over time. Islet transplantation has allowed some patients with type 1 diabetes to live without the need for insulin injections after receiving infusions of [donor cells](#), however there are not enough cells to treat the millions of patients who can benefit. Thus far, research efforts have focused primarily on creating more [pancreatic cells](#) for transplant from sources like embryonic (hESc), pluripotent (hPSc) and adult [stem cells](#), and porcine (pig) islets, among others. A more efficient and potentially safer solution could lie in regenerating a patient's own insulin-producing cells, sidestepping the need to transplant donor tissue altogether and eliminating other immune-related roadblocks.

"The ability to offer regenerative medicine strategies to restore insulin production in the native pancreas could one day replace the need for transplantation of the pancreas or [insulin-producing](#)

APA citation: Unique pancreatic stem cells have potential to regenerate beta cells, respond to glucose (2018, February 27) retrieved 17 April 2021 from <https://medicalxpress.com/news/2018-02-unique-pancreatic-stem-cells-potential.html>

This document is subject to copyright. Apart from any fair dealing for the purpose of private study or research, no part may be reproduced without the written permission. The content is provided for information purposes only.