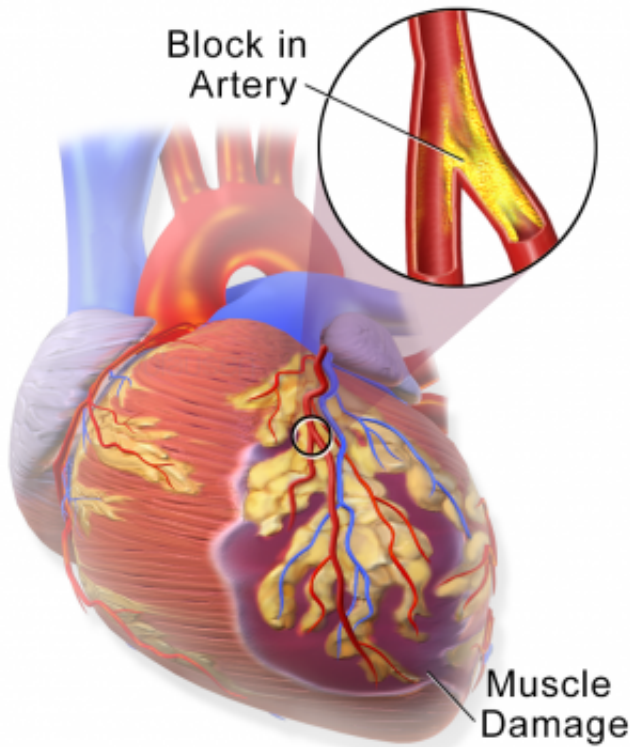


Heart attack protocol can improve outcomes, reduce disparities between men and women

10 March 2018



Heart Attack

Myocardial Infarction or Heart Attack. Credit: Blausen Medical Communications/Wikipedia/CC-A 3.0

Cleveland Clinic researchers have found that implementing a four-step protocol for the most severe type of heart attack not only improved outcomes and reduced mortality in both men and women, but eliminated or reduced the gender disparities in care and outcomes typically seen in this type of event.

The research was presented at the American College of Cardiology's 67th Annual Scientific Session and published in the *Journal of the*

American College of Cardiology.

Cardiovascular disease is the leading cause of death in [women](#), and STEMI (ST elevation myocardial infarction, caused by an abrupt and prolonged blockage of the blood supply to the heart, impacts about one million women each year. Previous studies have shown that women with STEMI have worse clinical outcomes, including higher mortality and higher rates of in-hospital adverse events. Studies have shown women also typically have higher door-to-balloon times (time from when they arrive at the hospital to when they receive a coronary intervention like angioplasty and stenting). They receive lower rates of guideline-directed medical therapy: for example, they are treated with lower rates of aspirin within 24 hours. Previous studies have attributed the differences in care and outcomes in women with STEMI to their being older and higher risk patients than men, suggesting that these disparities may be inevitable.

In this study, Cleveland Clinic researchers put in place a comprehensive four-step protocol for STEMI patients, designed to minimize variability in care. It included: (1) standardized emergency department (ED) cardiac catheterization lab activation criteria, (2) a STEMI Safe Handoff Checklist, (3) immediate transfer to an available catheterization lab, and (4) using the radial artery in the wrist as the first option for percutaneous (under the skin) coronary intervention, like stenting. This approach has been shown to have fewer bleeding complications and improved survival when compared to using the femoral artery.

The results of the study showed improvements in both genders after implementation of the protocol, and substantial reductions in care differences between men and women. Prior to the protocol, women had significantly higher 30-day mortality

than men (10.7 percent vs 4.6 percent) prior to the protocol. Providers were able to lower the overall mortality rates for both men and women, and the difference between the genders was no longer statistically significant (6.5 percent vs. 3.3 percent). In-hospital deaths of women with STEMI were reduced by about 50 percent.

In addition, there was also no difference in rates of major adverse events such as in-hospital stroke, bleeding, vascular complication and transfusions after implementation. Prior to the protocol, mean door-to-balloon time for women was an average of 20 minutes longer compared to men, but afterwards, the times were equal between men and women. The system also resulted in equal rates of guideline-directed medical therapy in women.

"It's long been known that the gender gap for these types of critical heart attacks is a real issue. However, there is very little data demonstrating successful strategies and no formal recommendation on how a system should be designed to provide the best possible care for women," said Umesh Khot, M.D., vice chairman of Cardiovascular Medicine at Cleveland Clinic and senior author of the study. "Our research shows that putting into place a system that minimizes care variability raises the level of care for everyone and could be the first step to resolving the long-standing [gender disparities](#)."

The prospective observational study looked at 1,272 consecutive STEMI patients at Cleveland Clinic, of which 868 were men and 404 were women. The four-step STEMI protocol was put into place July 15, 2014. Consecutive patients were studied from July 15, 2014, through December 31, 2016. Patients treated from January 1, 2011, through July 14, 2014, were studied as a control group. Patients were assessed for guideline-directed medical therapy prior to percutaneous [coronary intervention](#), mean door-to-balloon time, in-hospital adverse events, and 30-day mortality.

Provided by Cleveland Clinic

APA citation: Heart attack protocol can improve outcomes, reduce disparities between men and women (2018, March 10) retrieved 24 June 2019 from <https://medicalxpress.com/news/2018-03-heart-protocol-outcomes-disparities-men.html>

This document is subject to copyright. Apart from any fair dealing for the purpose of private study or research, no part may be reproduced without the written permission. The content is provided for information purposes only.