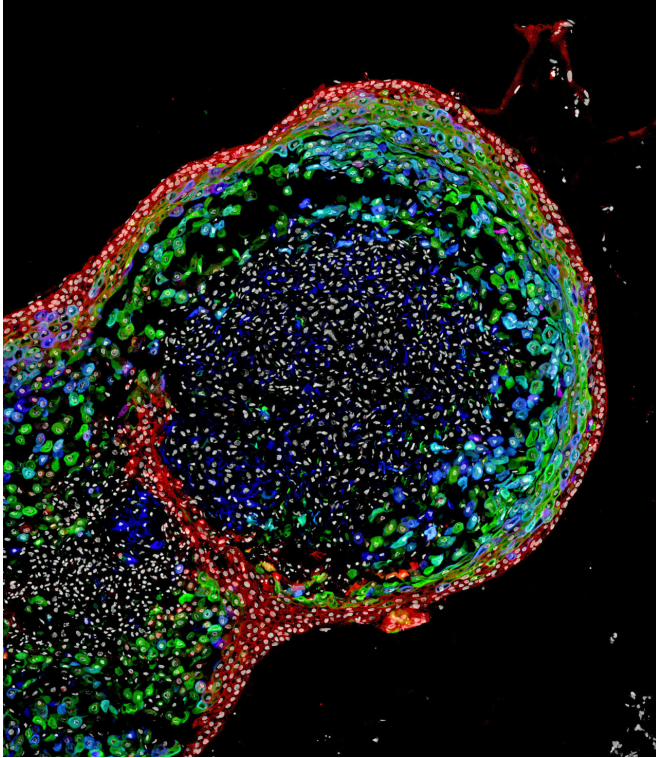


Scientists grow human esophagus in lab

20 September 2018



This confocal microscopic image shows a two-month-old human esophageal organoid bioengineered by scientists from pluripotent stem cells. About 700 micrometers (0.027 inches) in size, the organoid is stained to visualize key structural proteins expressed in mature esophagus, such as involucrin (green) and cornulin (blue). Researchers report in the journal *Cell Stem Cell* the organoids enhance the study of esophageal disorders, personalized medical and the development of regenerative tissue therapies for people. Credit: Cincinnati Children's

Scientists working to bioengineer the entire human gastrointestinal system in a laboratory now report using pluripotent stem cells to grow human esophageal organoids.

Published in the journal *Cell Stem Cell* the study is the latest advancement from researchers at the Cincinnati Children's Center for Stem Cell and Organoid Medicine (CuSTOM). The center is

developing new ways to study birth defects and diseases that affect millions of people with gastrointestinal disorders, such as gastric reflux, cancer, etc. The work is leading to new personalized diagnostic methods and focused in part on developing regenerative tissue therapies to treat or cure GI disorders.

The newly published research is the first time scientists have been able to grow human esophageal tissue entirely from [pluripotent stem cells](#) (PSCs), which can form any tissue type in the body, according to the authors. Cincinnati Children's scientists and their multi-institutional collaborators already have used PSCs to bioengineer human intestine, stomach, colon and liver.

"Disorders of the esophagus and trachea are prevalent enough in people that organoid models of human esophagus could be greatly beneficial," said Jim Wells, Ph.D., chief scientific officer at CuSTOM and study lead investigator. "In addition to being a new model to study birth defects like esophageal atresia, the organoids can be used to study diseases like eosinophilic esophagitis and Barrett's metaplasia, or to bioengineer genetically matched esophageal tissue for individual patients."

The study involves collaboration from researchers in the divisions of Developmental Biology, Oncology, Allergy and Immunology, and Endocrinology at Cincinnati Children's and the Gladstone Institutes in San Francisco. This includes study first author Stephen Trisno, a graduate student and member of the Wells laboratory.

The Food Channel

The esophagus is a muscular tube that actively passes food from the mouth to the stomach. The organ can be affected by congenital diseases, such as esophageal atresia—a narrowing or malformation of the esophagus caused by genetic mutations.

Additionally, there are several diseases that can afflict people later in life. Some include [esophageal cancer](#), gastroesophageal reflux disease (GERD), or a rare ailment called achalasia—a disease affecting the muscles of the lower esophagus that prevents contraction of the organ and the passage of food.

All of the conditions need better treatments, researchers note. This requires a more precise understanding of the genetic and biochemical mechanisms behind their cause—a need filled by the ability to generate and study robust, functional, genetically matched models of human esophageal tissue that can be grown from a person's own cells.

Tracing Nature's Path

The scientists based their new method for using human PSCs to general esophageal organoids on precisely timed, step-by-step manipulations of genetic and biochemical signals that pattern and form embryonic endoderm and foregut tissues. They focused in part on the gene Sox2 and its associated protein—which are already known to trigger esophageal conditions when their function is disrupted. —The scientists used mice, frogs and human [tissue](#) cultures to identify other genes and molecular pathways regulated by Sox2 during esophagus formation.

The scientists report that during critical stages of embryonic development, the Sox2 gene blocks the programming and action of genetic pathways that direct cells to become respiratory instead of esophageal. In particular, the Sox2 protein inhibits the signaling of a molecule called Wnt and promotes the formation and survival of esophageal tissues.

In another test to help confirm the importance of Sox2 expression on esophageal formation, researchers studied the complete loss of Sox2 during the development process in mice. The absence of Sox2 resulted in esophageal agenesis—a condition in which the esophagus terminates in a pouch and does not connect to the stomach.

After successfully generating fully formed human

esophageal organoids—which grew to a length of about 300-800 micrometers in about two months—the bioengineered tissues were compared biochemically to esophageal tissues from patient biopsies. Those tests showed the bioengineered and biopsies tissues were strikingly similar in composition, according to the authors.

The research team is continuing its studies into the bioengineering process for esophageal organoids and identifying future projects to advance the technology's eventual therapeutic potential, according to Wells. This includes using the organoids to examine the progression of specific diseases and congenital defects affecting the esophagus.

More information: *Cell Stem Cell* (2018). [DOI: 10.1016/j.stem.2018.08.008](https://doi.org/10.1016/j.stem.2018.08.008)

Provided by Cincinnati Children's Hospital Medical Center

APA citation: Scientists grow human esophagus in lab (2018, September 20) retrieved 21 October 2021 from <https://medicalxpress.com/news/2018-09-scientists-human-esophagus-lab.html>

This document is subject to copyright. Apart from any fair dealing for the purpose of private study or research, no part may be reproduced without the written permission. The content is provided for information purposes only.