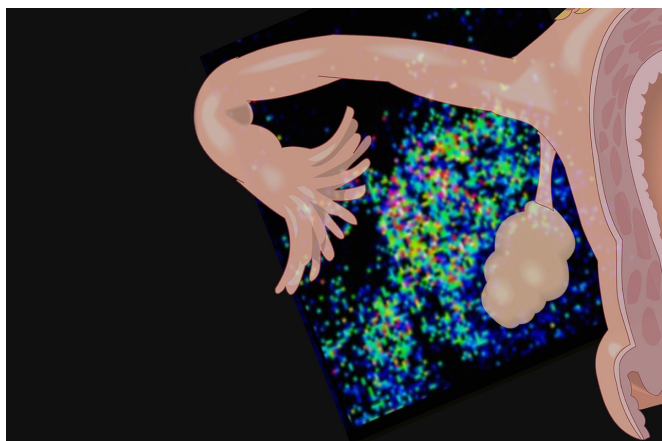


Crosstalk between fallopian tube, ovary may drive the spread of ovarian cancer

9 October 2018, by Jacqueline Carey



UIC research published in *ACS Central Science* shows that the norepinephrine levels increase around the ovary in the presence of fallopian tube-derived cancer cells
Credit: UIC/Sanchez, et. al.

New research from the University of Illinois at Chicago shows that cancer cells in the fallopian tube affect normal chemical signaling between reproductive tissues and stimulate the release of norepinephrine, a small molecule hormone, from the ovary.

Reported in *ACS Central Science*, an open-access journal published by the American Chemical Society, the study suggests that [cancer cells](#) take over the communication between the fallopian tube and the [ovary](#) to create an environment that is more hospitable to its growth, and that the increased norepinephrine levels cause [cancer](#) cells to migrate from the fallopian tube to the ovary.

UIC's Joanna Burdette, a co-author on the study, said it is a common misconception that [ovarian cancer cells](#) are formed in the ovary.

"Over the last several years we have come to learn that ovarian cancer cells, specifically high-grade

serous ovarian cancer cells, originate in the fallopian tube and migrate to the ovary where they become established as ovarian cancer, the fifth leading cause of cancer death among women," said Burdette, professor of medicinal chemistry and pharmacognosy at the UIC College of Pharmacy.

Using imaging mass spectrometry and ovarian tissue from mice, the researchers visualized the spatial distribution of chemical signals around the [ovarian tissue](#) in response to eight different cell environments, including cells engineered to represent healthy fallopian tube cells and fallopian tube-derived ovarian cancer cells at various stages of development.

They found that the concentration of norepinephrine was significantly increased and centrally located around the ovary only when cancer cells derived from the fallopian tube were present.

"This tells us that the communication between the fallopian tube and the ovary changes as normal fallopian tube cells evolve to become aggressive, particularly when they are in proximity to the ovary," Burdette said.

Laura Sanchez, the corresponding author of the study, said the findings demonstrate the important role of chemistry and chemical signaling in the development of ovarian cancer.

"When it comes to cancer research, chemistry has often been overlooked in favor of studying the impact of various proteins on cell signaling, but here we show that cancer essentially hijacks the whole chemical signaling process between normal tissues to its benefit," said Sanchez, assistant professor of medicinal chemistry and pharmacognosy at the UIC College of Pharmacy.

"Using this novel mass spectrometry platform, we've been able to unlock one half of a complex

puzzle. We now know that in the presence of cancer, the crosstalk between the fallopian tube and the ovary changes." Sanchez said. "We don't know yet what the [fallopian tube](#) signals to the ovary, but we know that it causes the ovary to release norepinephrine, which signals cancer cells to migrate."

"The findings from this study shed light on new avenues researchers can explore in the search for better treatment protocols and, perhaps, even prevention opportunities," said Burdette. "Any advance we can make to better understand ovarian cancer has the potential to improve outcomes, which tend to be worse in high-grade [serous ovarian cancer](#) than in many others."

The American Cancer Society estimates that 22,240 women in the U.S. will be diagnosed with [ovarian cancer](#) in 2018 and that the majority (85 percent) will be diagnosed after the cancer has spread, making it more difficult to treat.

Sanchez said that the study results also highlight the utility of imaging mass spectrometry to study chemical communication between many different tissues and [cells](#).

"This approach has the potential to be applied to a vast range of cell and tissue types to address many conditions," she said.

More information: Katherine E. Zink et al, Imaging Mass Spectrometry Reveals Crosstalk between the Fallopian Tube and the Ovary that Drives Primary Metastasis of Ovarian Cancer, *ACS Central Science* (2018). [DOI: 10.1021/acscentsci.8b00405](#)

Provided by University of Illinois at Chicago

APA citation: Crosstalk between fallopian tube, ovary may drive the spread of ovarian cancer (2018, October 9) retrieved 22 May 2019 from <https://medicalxpress.com/news/2018-10-crosstalk-fallopian-tube-ovary-ovarian.html>

This document is subject to copyright. Apart from any fair dealing for the purpose of private study or research, no part may be reproduced without the written permission. The content is provided for information purposes only.