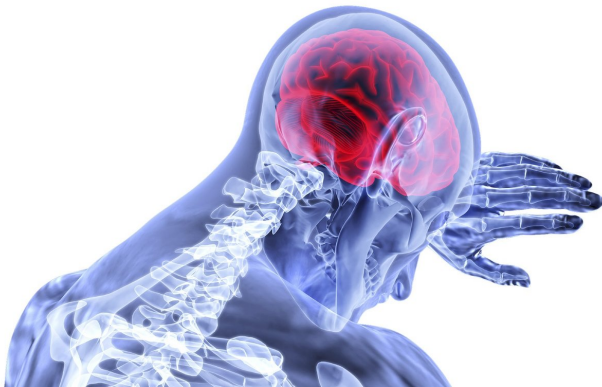


Study shows need for thrombectomy-capable stroke centers remains high in 64 percent of communities studied

7 February 2019



Credit: CC0 Public Domain

"While the severe stroke patients benefiting from a thrombectomy only make up 15-20 percent of all strokes at most, the evidence shows that timely access to this procedure is beneficial to this set of patients," said Lee H. Schwamm, MD, FAHA, FANA, executive vice chairman, Neurology Department at Massachusetts General Hospital and longtime American Heart Association/American Stroke Association volunteer expert. "The end goal is for every step of the patient care continuum – from stroke center, [hospital emergency room](#) and emergency [medical service](#)—to follow the evidence-based guidelines set forth for quick evaluation and treatment of strokes of all magnitudes."

Provided by American Heart Association

The need for thrombectomy-capable stroke centers (TSC) certification remains high as 64 percent of communities are beyond the maximum drive time of 30 minutes, according to a study presented today presented in Honolulu at the American Stroke Association's International Stroke Conference 2019, a world premier meeting for researchers and clinicians dedicated to the science and treatment of cerebrovascular disease.

The study, "A Proposed Methodology Success to Determine the Need for Certified Thrombectomy Capable Stroke Centers," assesses [travel time](#) between Comprehensive Stroke Centers and thrombectomy-capable [stroke](#) centers to measure the time period that endovascular therapy is administered. This study's results, which show that 32 percent of the country is classified as a "very high need" area and an additional 32 percent classified as a "high need" area from TSCs with a 30-minute maximum drive time, will aid regional authorities in determining if a TSC should be included in a transport destination routing plan in their stroke systems of care.

APA citation: Study shows need for thrombectomy-capable stroke centers remains high in 64 percent of communities studied (2019, February 7) retrieved 21 May 2019 from <https://medicalxpress.com/news/2019-02-thrombectomy-capable-centers-high-percent.html>

This document is subject to copyright. Apart from any fair dealing for the purpose of private study or research, no part may be reproduced without the written permission. The content is provided for information purposes only.