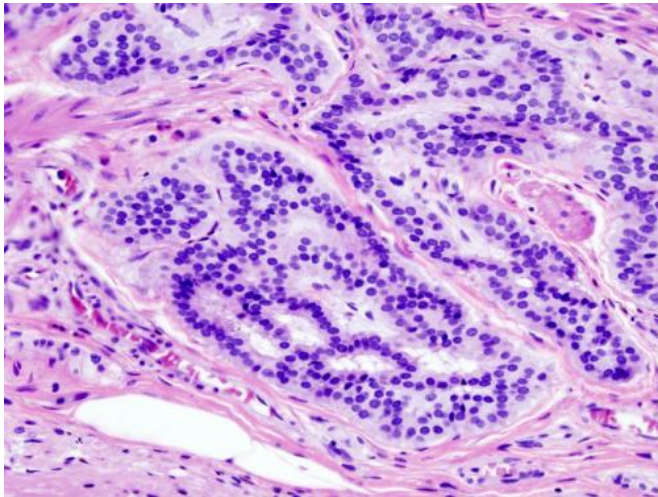


Colorectal cancer in patients with early onset is distinct from that in older patients

11 March 2019



Cancer — Histopathologic image of colonic carcinoid.
Credit: Wikipedia/CC BY-SA 3.0

New research indicates that colorectal cancer diagnosed at an early age has clinical and genetic features that are different from those seen in traditional colorectal cancer diagnosed later in life. Published early online in *Cancer*, a peer-reviewed journal of the American Cancer Society, the study also revealed certain unique features in especially young patients and those with predisposing conditions.

Although incidence and mortality rates of [colorectal cancer](#) have fallen in patients aged 50 years and older, early-onset colorectal cancer rates have been increasing over the past two decades. To look for differences between early-onset and late-onset colorectal cancer, investigators at The University of Texas MD Anderson Cancer Center in Houston analyzed information on more than 36,000 colorectal cancer patients.

The researchers found that younger patients were more likely to have certain [genetic mutations](#) and

certain subtypes of colorectal cancer than [older patients](#). Also, among patients with early-onset colorectal cancer, very young patients (aged 18-29 years) were unique from older patients (aged 30-49 years) in terms of the clinical and genetic features of their cancer. Likewise, patients with early-onset colorectal cancer who had predisposing conditions, such as [inflammatory bowel disease](#), had different clinical and genetic characteristics compared with patients without predisposing conditions.

"We need to appreciate that there are unique biologic subtypes within young patients that may affect how their cancers behave and may require a personalized approach to treatment," said senior author Jonathan Loree, MD. "Going forward, special clinical consideration should be given to, and further scientific investigations should be performed for, both very [young patients](#) with colorectal cancer and those with predisposing medical conditions."

March is Colorectal Cancer Awareness Month.

More information: "Clinical and Molecular Characterization of Early-Onset Colorectal Cancer." Alexandra N. Willauer, Yusha Liu, Allan A.L. Pereira, Michael Lam, Jeffrey S. Morris, Kanwal P.S. Raghav, Van K. Morris, David Menter, Russell Broaddus, Funda Meric-Bernstam, Andrea Hayes-Jordan, Winston Huh, Michael J. Overman, Scott Kopetz, and Jonathan M. Loree. *CANCER*; Published Online: March 11, 2019, [DOI: 10.1002/cncr.31994](#)

Provided by Wiley

APA citation: Colorectal cancer in patients with early onset is distinct from that in older patients (2019, March 11) retrieved 18 September 2019 from <https://medicalxpress.com/news/2019-03-colorectal-cancer-patients-early-onset.html>

This document is subject to copyright. Apart from any fair dealing for the purpose of private study or research, no part may be reproduced without the written permission. The content is provided for information purposes only.