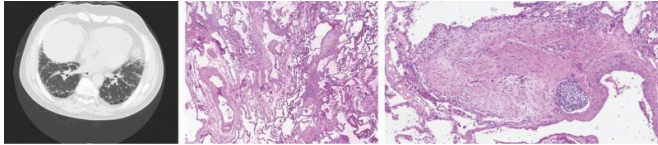


# Protein linked to cancer growth drives deadly lung disease

20 March 2019



Images show, from left, a chest CT scan of a patient with idiopathic pulmonary fibrosis and lung biopsies displaying the typical disease pattern and scarring. Credit: Cedars-Sinai

A protein associated with cancer growth appears to drive the deadly lung disease known as idiopathic pulmonary fibrosis, according to new research from Cedars-Sinai. The discovery, made in laboratory mice and human tissue samples, may have implications for treating the disease using existing anti-cancer therapies that inhibit the protein PD-L1.

Idiopathic pulmonary [fibrosis](#) is a chronic, progressive [lung](#) condition of unknown cause that affects more than 100,000 people in the U.S. It consists of fibrosis—a buildup of fibrous scar tissue—that eventually robs the lungs of the ability to transport oxygen to the bloodstream. Although the disease progresses at variable rates, most patients die within five years after being diagnosed, according to the National Institutes of Health.

"At present, there is no known cure for this devastating condition," said Paul Noble, MD, professor of Medicine and chair of the Department of Medicine, director of the Women's Guild Lung Institute and the Vera and Paul Guerin Family Distinguished Chair in Pulmonary Medicine at Cedars-Sinai. "Current FDA- approved drugs only slow the fibrosis in certain individuals or treat some symptoms. This study opens a pathway for developing a treatment for [idiopathic pulmonary](#)

[fibrosis](#)."

Noble and Dianhua Jiang, MD, Ph.D., professor of Medicine at Cedars-Sinai, were co-corresponding authors of the research published in the journal *JCI Insight*.

The study focused on cells known as fibroblasts, which produce proteins to help build the extracellular matrix—a meshwork of macromolecules that provides structure and biochemical support for cells in the body's tissues. In idiopathic pulmonary fibrosis, defective fibroblasts invade normal lung tissue and generate excessive deposits of fibrous (scar) tissue that progressively impairs lung function.

In examining lung tissue samples from idiopathic pulmonary fibrosis patients, the study's investigators found that the invasive fibroblasts secreted high levels of PD-L1, a protein found on normal cells that prevents [immune cells](#) from attacking them. By "masquerading" as [normal cells](#), the invasive fibroblasts could evade destruction by the body's immune system.

In experiments with laboratory mice, the team then demonstrated that introduction of normal fibroblasts did not result in developing pulmonary fibrosis and that the severity of disease could be reduced by using genetic and antibody techniques to inhibit PD-L1.

"Cumulatively, these results identify PD-L1 as a driver of fibroblast invasion in idiopathic pulmonary fibrosis and support PD-L1 as a potential therapeutic target for the condition," Jiang said.

Based on the findings, the research team is designing a proposal for a Phase I clinical trial involving the use of a PD-L1-inhibiting drug against this disease. The trial would evaluate the safety of the drug in patients. If found to be safe, the [drug](#) could then be tested in later trials to gauge its

effectiveness and further test its safety.

Currently, there are several PD-L1-inhibiting drugs approved by the FDA for treating cancer. Some cancer cells thwart attack by the [immune system](#) by secreting PD-L1 in a process similar to the one described in the new study. "Our proposal is to use one of these FDA-approved drugs in a clinical trial for idiopathic pulmonary fibrosis," Noble said.

**More information:** Yan Geng et al, PD-L1 on invasive fibroblasts drives fibrosis in a humanized model of idiopathic pulmonary fibrosis, *JCI Insight* (2019). [DOI: 10.1172/jci.insight.125326](https://doi.org/10.1172/jci.insight.125326)

Provided by Cedars-Sinai Medical Center

APA citation: Protein linked to cancer growth drives deadly lung disease (2019, March 20) retrieved 22 May 2019 from <https://medicalxpress.com/news/2019-03-protein-linked-cancer-growth-deadly.html>

*This document is subject to copyright. Apart from any fair dealing for the purpose of private study or research, no part may be reproduced without the written permission. The content is provided for information purposes only.*