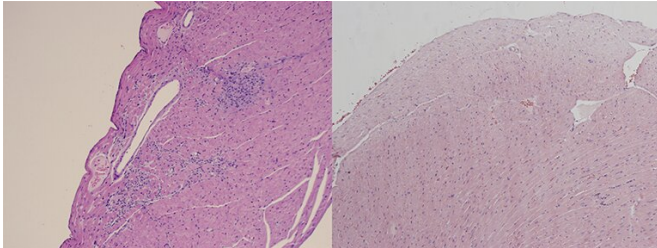


How common gut bacteria trigger a lethal autoimmune disease

19 June 2019, by Ziba Kashef



Images of heart tissue from a mouse model of antiphospholipid syndrome. The animals' gut was either colonized with the human gut bacterium *Roseburia intestinalis* that led to heart attacks and inflammation (left) or pretreated with an antibiotic that left the heart uninflamed (right). Credit: Ruff et al, *Cell Host & Microbe* 2019

What causes the immune system, designed to protect us, to turn on the body and attack healthy cells? Common bacteria that reside in the human gut may be partly to blame, say Yale researchers, who studied the origins of a serious autoimmune disease that frequently affects young women.

For their study, the research team focused on cells from patients with antiphospholipid syndrome, an [immune system](#) disorder that raises the risk of blood clots. This chronic condition can lead to lung clots, strokes, heart attacks, and in pregnant women, miscarriages or still births.

Using patient immune cells and antibodies, as well as animal models of the disease, the investigators did several experiments to explore the phenomenon. They found that a [common gut bacterium](#), *Roseburia intestinalis*, can trigger the disease in individuals who have a genetic predisposition. In those patients, the immune system's defender T and B cells react to a blood protein involved in clotting, and also to the bacteria, in certain [amino acids](#) found in the

bacteria. Over time, this ongoing "cross-reactive" response leads to tissue damage and chronic disease.

By identifying a gut bacterium, instead of the immune system, as the target for treatment, the study could lead to new drugs for these patients, according to the scientists. The research was also the first to show cross-reactivity of gut bacteria in humans with this disease, said senior author Dr. Martin Kriegel of Yale—a finding that could impact the understanding and treatment of other autoimmune diseases.

The full study is published in *Cell Host & Microbe*.

More information: William E. Ruff et al. Pathogenic Autoreactive T and B Cells Cross-React with Mimotopes Expressed by a Common Human Gut Commensal to Trigger Autoimmunity, *Cell Host & Microbe* (2019). [DOI: 10.1016/j.chom.2019.05.003](https://doi.org/10.1016/j.chom.2019.05.003)

Provided by Yale University

APA citation: How common gut bacteria trigger a lethal autoimmune disease (2019, June 19) retrieved 8 March 2021 from <https://medicalxpress.com/news/2019-06-common-gut-bacteria-trigger-lethal.html>

This document is subject to copyright. Apart from any fair dealing for the purpose of private study or research, no part may be reproduced without the written permission. The content is provided for information purposes only.