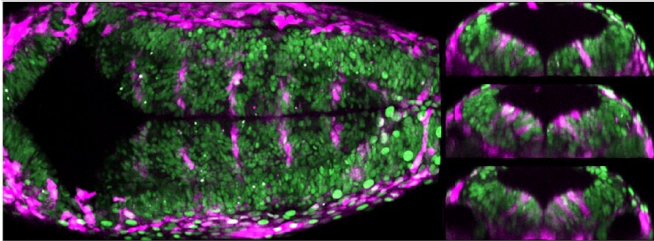


# Mechanical forces control cell fate during brain formation

29 July 2019



Dorsal view of the posterior brain of a zebrafish transgenic embryo where all the cellular nuclei and in magenta see cells that respond to mechanical signals. To the right are the cross sections across the borders where the sensing cells of mechanical changes in magenta are seen. Credit: UPF

A new study coordinated by the Research Group in Developmental Biology at UPF shows that during the embryonic development of the brain, the cells that are between adjacent segments detect the mechanical forces generated during morphogenesis to regulate the balance between progenitor stem cells and differentiated neurons. The study has been published in the journal *Development*.

In vertebrates, the central nervous system is formed from an embryonic structure divided into three vesicles of the brain and the spinal cord. The rearmost brain vesicle will give rise to important adult derivatives such as the cerebellum and is where the cranial nerves that innervate the face derive from. During [embryonic development](#), the hindbrain is subdivided into seven segments, called rhombomeres where neuronal [progenitors](#) are generated that will give rise to both motor and sensory neurons.

During segmentation of the hindbrain, a specific population of cells is located at the interface between successive rhombomeres. These

boundary cells act as a barrier so that neighbouring cell populations do not mix, send instructions to progenitor cells of the adjacent rhombomere, and act as a source of progenitors and neurons. Although mechanical signals have been seen to be increasingly involved in directing cellular behaviour, how this happens in vivo had not yet been demonstrated.

Now, the group led by Cristina Pujades at the Department of Experimental and Health Sciences (DCEXS) at UPF has investigated how these boundary cells are able to "sense" the mechanical stimuli and transduce them into specific biological behaviours during zebrafish hindbrain segmentation.

"Using transgenic zebrafish embryos that express fluorescent markers under the control of [mechanical signals](#), we show that boundary cells in fact act as mechanosensors, through the activity of Yap/Taz-TEAD proteins," explains Adrià Voltes, first author of the article. This activity is lost when the authors manipulate the actomyosin cytoskeleton in both whole embryos and clonal populations, indicating that the pathway responds to mechanical cues in a cell-autonomous manner.

However, the decreased activity of these proteins, either conditionally or by yap and taz mutants, decreases the number of proliferating boundary cells but does not affect their differentiation into neurons. "Therefore, the activity of Yap/Taz-TEAD is essential to maintain boundary cells as proliferating progenitors and therefore as a niche for stem cells," explains Cristina Pujades.

Taken together, these data show that the boundary [cells](#) in the hindbrain sense mechanical forces through Yap/Taz-TEAD to regulate the proliferation of progenitors during segmentation. "Based on our results, we propose that the [mechanical forces](#) generated during the process of embryonic development regulate the maintenance of the

progenitors and, therefore, control the balance between the proliferation and the differentiation of neurons," concludes Cristina Pujades.

**More information:** Adrià Voltes et al, Yap/Taz-TEAD activity links mechanical cues to progenitor cell behavior during zebrafish hindbrain segmentation, *Development* (2019). DOI: [10.1242/dev.176735](https://doi.org/10.1242/dev.176735)

Provided by Universitat Pompeu Fabra -  
Barcelona

APA citation: Mechanical forces control cell fate during brain formation (2019, July 29) retrieved 15 September 2019 from <https://medicalxpress.com/news/2019-07-mechanical-cell-fate-brain-formation.html>

*This document is subject to copyright. Apart from any fair dealing for the purpose of private study or research, no part may be reproduced without the written permission. The content is provided for information purposes only.*