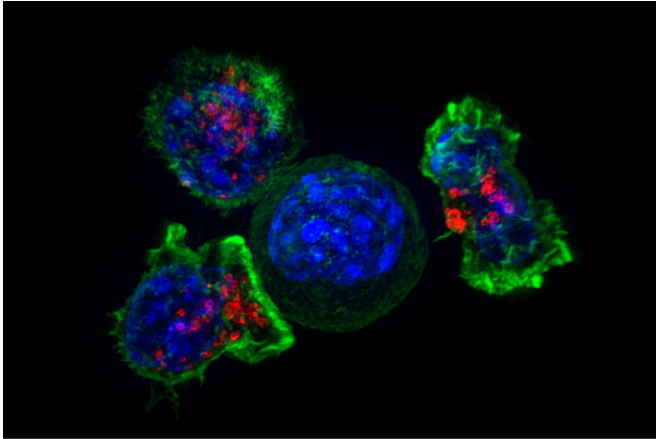


Obesity pandemic shifting cancer to younger people

4 September 2019



Killer T cells surround a cancer cell. Credit: NIH

A new study looking at incidence of disease data nationwide from 2000 to 2016 found a shift in obesity-associated cancers (OACs) to younger individuals. Typically, these cancers are diagnosed at higher rates among people older than 65. The most notable findings pertain to increases in these OACs among non-Hispanic Black and Hispanic women and men for whom certain cancers increased by 200-400%.

The study, "Changes in Age Distribution of Obesity-Associated Cancers," was recently published in *JAMA Network Open*. It was conducted by a team at Case Western Reserve University School of Medicine and the Case Comprehensive Cancer Center. The team includes Siran Koroukian, Weichuan Dong, and Nathan Berger. Koroukian and Berger are faculty with the School of Medicine and members of the Case Comprehensive Cancer Center. Berger is also an oncologist at Seidman Cancer Center at University Hospitals Cleveland Medical Center.

Data were used from more than six million incident cancer cases from the Surveillance Epidemiology

and End Results (SEER) database, recognized as an authoritative source for U.S. cancer statistics. The SEER is administered by National Institute of Health's National Cancer Institute.

"We were struck by the shift in obesity-associated cancers to people in the 20 to 49 age group, but most notably to those in the 50 to 64 age range," said Koroukian. "Keep in mind that the population aged 50 to 64 increased in number by nearly 52% in that time frame, so the absolute numbers of people affected by these changes are substantial. It also is notable that the percent increase of obesity-associated cancer cases was highest among non-Hispanic Black and Hispanic women and men."

Researchers point out that many of the people 50 to 64 years of age with cancers diagnosed in the years from 2000 to 2016 are now cancer survivors, and many will be part of incoming Medicare cohorts or are now covered by Medicare. It also is likely that these individuals will be covered by Medicaid, given the financial burden of cancer care. Thus, obesity-associated cancers have both a public health and public finance impact.

"We all know that [public health](#) education efforts are important to address the impact of obesity on individuals' health and quality of life," said Berger. "This analysis of the SEER data proves the point at a population level, with dramatic findings for the Black and Hispanic communities. Public health practitioners and officials are wise to continue and even increase efforts to inform people about the adverse consequences of obesity, and support individuals and communities in changing behaviors that contribute to obesity."

Obesity-associated cancers included in this study include cancers of the colon and rectum (combined as colorectal), female breast, uterus, ovary, gallbladder and other biliary organs, esophagus, stomach, liver and intrahepatic bile duct, pancreas, kidney and renal pelvis, thyroid, and multiple

myeloma. Cancers not included in the OAC grouping (including lung cancer, melanoma, and brain cancers) are referred to as non-OACs.

Researchers broke out the number of cases by specific types of cancer, stratified by age, gender and race. Specific types of OACs were dramatically higher in some populations and the contrast between the groups was striking, notably: the number of all OACs considered collectively in people aged 50 to 64 increased by 25% in non-Hispanic white women and nearly 200% in Hispanic men. For non-OACs considered collectively, among non-Hispanic white men aged 50 to 64, the increase was nearly 10%, while for Hispanic women, all non-OACs increased by nearly 100%.

Some of the greatest increases were observed in uterine cancer among Hispanic women, and in liver and thyroid cancers across all sex and race/ethnicity strata.

"Additional research is needed to ascertain the stage of [cancer](#) at which these cancers were diagnosed in various populations," said Koroukian. "Unfortunately, cancers diagnosed in younger people tend to be found at later stages of the disease, contributing to poor prognosis and premature mortality."

More information: Siran M. Koroukian et al, Changes in Age Distribution of Obesity-Associated Cancers, *JAMA Network Open* (2019). [DOI: 10.1001/jamanetworkopen.2019.9261](#)

Provided by Case Western Reserve University
APA citation: Obesity pandemic shifting cancer to younger people (2019, September 4) retrieved 5 December 2020 from <https://medicalxpress.com/news/2019-09-obesity-pandemic-shifting-cancer-younger.html>

This document is subject to copyright. Apart from any fair dealing for the purpose of private study or research, no part may be reproduced without the written permission. The content is provided for information purposes only.