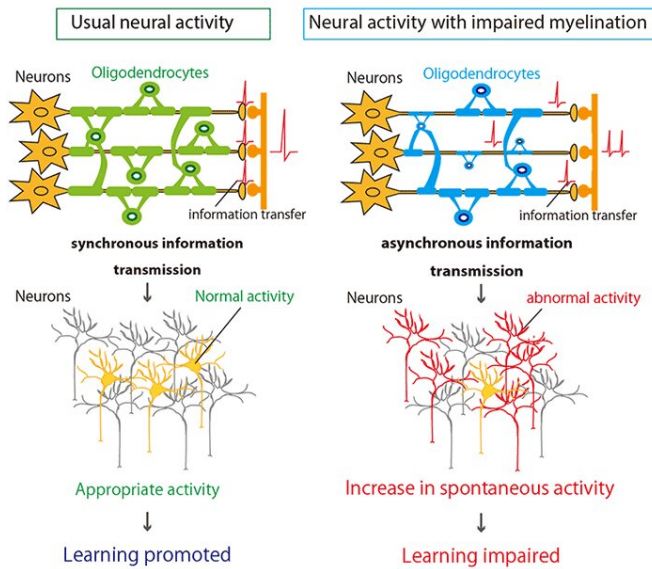


Abnormal neuronal activities caused by myelin impairment have possible link to learning deficits

11 October 2019

(Tokyo University Graduate School of Medicine, Japan).



Credit: Kobe University

The neural circuit basis for motor learning tasks when myelination is impaired has been illuminated for the first time by an international collaboration of university research teams. They also succeeded in compensating for the impaired motor learning process by pairing appropriate actions with brain photo-simulation to promote synchronization of neuronal activities. This could contribute to future treatments for neurological and psychiatric diseases in which white matter function is impaired.

The research was carried out by Assistant Professor Daisuke Kato and Professor Hiroaki Wake (Kobe University Graduate School of Medicine, Japan), Professor Junichi Nabekura (National Institute of Physiological Sciences, Japan), Dr. R Douglas Fields (National Institutes of Health, U.S.) and Professor Masanori Matsuzaki

The results were first published in the journal *Glia*.

Myelin is sheath that forms around axons, regulating the speed of electrical impulses and efficiently transmitting them among the neurons. Myelinated bundles act as cables to connect distant brain regions. Once myelination is impaired or the [myelin](#) is damaged, the propagation of impulses in the neurons slows down or is dysregulated. This impaired regulation has been linked to abnormal activity in neuronal populations, resulting in learning deficits and aging (particularly in dementia and Alzheimer's disease). The resulting changes in white matter have been observed in the MRI scans of patients with Alzheimer's. However, it is still poorly understood how exactly impaired myelination affects the circuit properties of the brain that are important for learning and cognition.

This research showed that impaired myelination causes uncoordinated or asynchronous electrical impulse transmission between neurons. Impaired myelination was shown to have an adverse effect on motor learning in mice, suggesting that coordinated transmissions are vital for effective learning.

The population activity of neurons in the primary motor cortex of mice with myelin impairments was measured during a motor learning activity using in vivo two photon microscopy. Mice with head plates were inserted into body chambers. The mice were trained to pull and hold a lever that would dispense drops of water. Mouse behavior was monitored by infrared video camera. In the early stages of training there was no difference in the performance between myelin impaired mice and control mice. However, in the later stage of training the myelin

impaired mice had a lower success rate in performing the task, although the amount of attempts was similar. Although this suggests their motivation levels were the same, the myelin deficit made it more difficult for the mice improve their performance of this task. It also reduced the accuracy of their movements and increased the spontaneous activities of neuronal population.

Through analyzing the activity of the neurons of myelin impaired mice, they showed that asynchronous activity in the thalamocortical axons correlated with impaired task performance.

Thalamocortical axons are [nerve fibers](#) connecting the thalamus and cerebral cortex of the brain which carry nerve cells' information. Electrical stimulation of the motor cortex (output area) during the lever pull task was utilized to promote synchronous activity of neurons in motor cortex and to try to compensate for the performance of the mice. This promoted synchronous activity in the thalamocortical axons during learning and improved the success rate of the [mice](#) with myelin impairment.

The findings of this research illuminate how pathological neuronal circuit activity is affected by impaired myelination. The results also suggest that it may be possible to pair noninvasive brain stimulation with relevant behaviors to correct cognitive and behavioral abnormalities in the early stages of diseases with impaired white matter.

More information: Daisuke Kato et al. Motor learning requires myelination to reduce asynchrony and spontaneity in neural activity, *Glia* (2019). DOI: [10.1002/glia.23713](https://doi.org/10.1002/glia.23713)

Provided by Kobe University

APA citation: Abnormal neuronal activities caused by myelin impairment have possible link to learning deficits (2019, October 11) retrieved 15 November 2019 from <https://medicalxpress.com/news/2019-10-abnormal-neuronal-myelin-impairment-link.html>

This document is subject to copyright. Apart from any fair dealing for the purpose of private study or research, no part may be reproduced without the written permission. The content is provided for information purposes only.