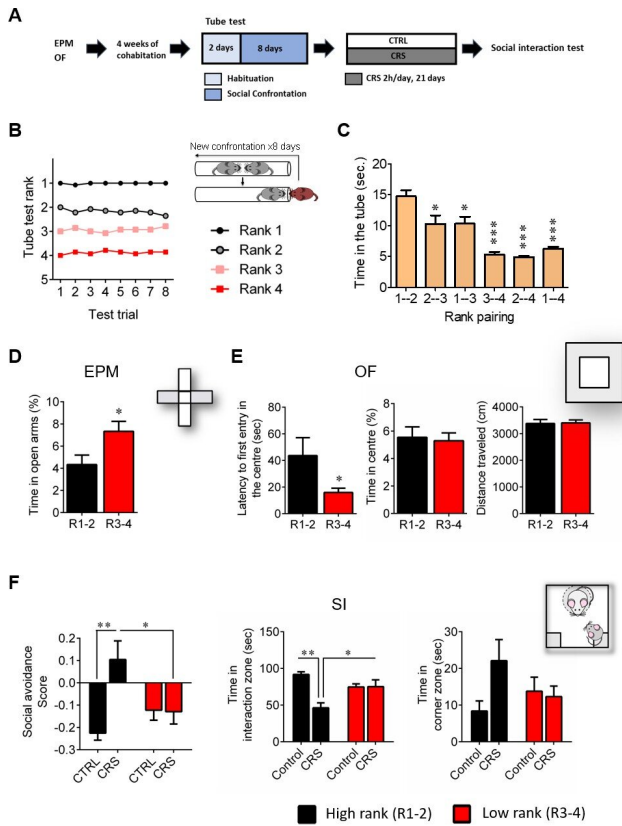


# Could depression be linked to cellular metabolism?

27 January 2020



[metabolism](#). Neurobiologists at EPFL tested this theory on [lab mice](#), and found that giving stressed mice a supplement containing acetyl-L-carnitine—a compound known to stimulate cellular metabolism—reduces the symptoms of depression. The scientists' findings have just been published in *eLife*.

Acetyl-L-carnitine is naturally found in our bodies and can be purchased as a food supplement. It stimulates the activity of mitochondria, which are our cells' powerhouses.

The researchers administered this compound to mice and then measured their resistance to stress. They found that acetyl-L-carnitine reduces the likelihood that mice will exhibit depressive behaviors. Using spectroscopy, the scientists observed that acetyl-L-carnitine stimulates cellular metabolism in a specific area of the brain—the nucleus accumbens—which plays an important role in reward, effort and motivation systems.

## High-rank mice more likely to get depressed

The researchers performed their experiment on groups of four mice ranging from high social rank to low social rank. They exposed the mice to stress conditions and found that only the high-rank mice showed depressive symptoms.

"High-rank mice are accustomed to being in control of a situation. But under our stress protocol—where they were physically constrained—they found themselves completely powerless," says Carmen Sandi, the study's lead author and head of EPFL's Behavioral Genetics Laboratory.

The researchers used standard behavioral tests, based on sociability and decision-making capabilities, to assess the degree of depression in [mice](#) that had and had not been administered acetyl-L-carnitine.

High rank mice exhibit susceptible behavioral phenotype after 21 days of chronic restraint stress. Credit: eLife

EPFL researchers have discovered a compound that stimulates brain-cell metabolism and reduces signs of depression in mice. The next step will be to test their findings on humans.

Chronic [stress](#) can be a major cause of [depression](#). The exact mechanism of how that works isn't clear, but the missing link could be found in the metabolic processes of brain cells. Recent studies have shown that stress depletes the brain's energy reserves—paving the way for depression to take hold. That implies the disorder could be treated by reversing the process and stimulating the brain's

## Next step—testing the findings on humans

Sandi notes that the role that mitochondria and metabolism play in depression is just starting to be explored. She points to a recent study carried out at The Rockefeller University which found that patients suffering from multi-resistant depression have very low blood levels of acetyl-L-carnitine.

"Our brain makes up just 2 percent of our body mass but accounts for 20 percent of the energy we burn, so it's not surprising that stress affects our metabolism," says Sandi. "Our brains' plasticity is highly solicited when we're in stressful situations, which means that giving a boost to brain-cell mitochondria could help them maintain energy levels and therefore stave off depression."

Sandi's research indicates that acetyl-L-carnitine can affect both cellular functioning and behavior. She now plans to conduct similar tests on humans. "We will soon apply for funding to carry out a study on human patients," she says.

**More information:** Antoine Cherix et al. Metabolic signature in nucleus accumbens for anti-depressant-like effects of acetyl-L-carnitine, *eLife* (2020). [DOI: 10.7554/eLife.50631](https://doi.org/10.7554/eLife.50631)

Provided by Ecole Polytechnique Federale de Lausanne

APA citation: Could depression be linked to cellular metabolism? (2020, January 27) retrieved 20 January 2022 from <https://medicalxpress.com/news/2020-01-depression-linked-cellular-metabolism.html>

*This document is subject to copyright. Apart from any fair dealing for the purpose of private study or research, no part may be reproduced without the written permission. The content is provided for information purposes only.*