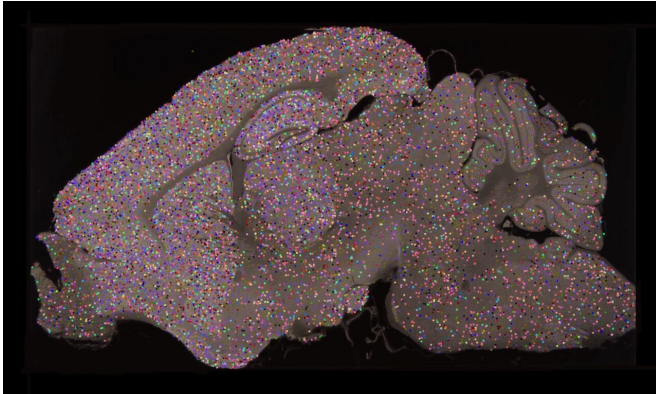


Clues to ageing come to light in vivid snapshots of brain cell links

11 June 2020



Adult mouse brain section showing increased synapse number and diversity indicated by coloured dots. Credit: Seth Grant University of Edinburgh.

The colorful pictures of the whole mouse brain at different ages are the first of their kind and a pivotal step forward in understanding behavior, scientists say.

Findings—published in the journal *Science* - could shed light on learning disability and dementia and help to reveal how memories are affected by age.

The images are of [synapses](#)—vital connections that carry electrical and chemical messages between [brain cells](#). Synapses store memories and synapse damage is linked to more than 130 [brain diseases](#).

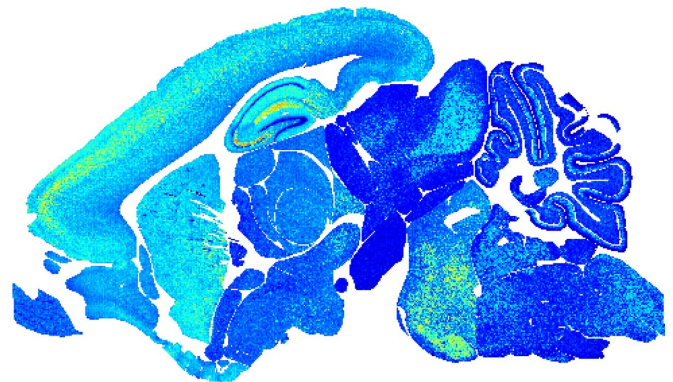
Researchers based at the University of Edinburgh color-coded the different types of molecules to highlight the range of synapses in mouse brains from birth to old age.

They discovered that the number and molecular makeup of synapses shifts with age in different parts of the brain. This happens at three main phases—childhood, middle and elderly age.

Synapse type shifts with age in patterns unique to areas of the brain, blossoming into a diverse array in midlife.

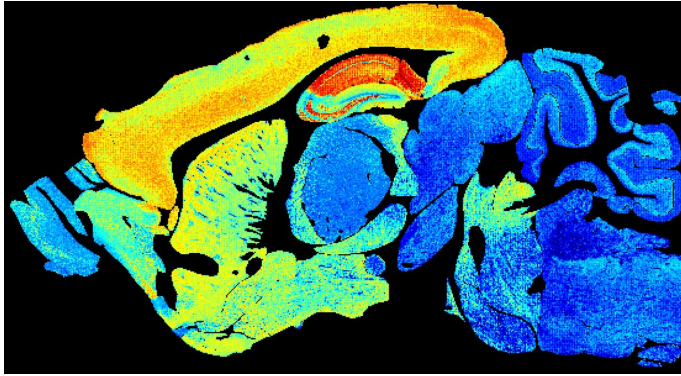
Images from middle-aged brains burst with color, illustrating a wide variety of synapses. Both very young and very old brain show less synapses and less complexity.

Researchers say these changes give insights into why genes cause synapse damage at set ages and in set brain areas.



Young mouse brain section showing lower synapse diversity. Credit Zhen Qui and Seth Grant University of Edinburgh. Credit: Zhen Qui and Seth Grant University of Edinburgh.

The findings could shed light on why we are more likely to develop brain conditions at certain ages, helping to explain why schizophrenia often starts in adolescence, or why dementia affects [older adults](#).



Adult mouse brain section showing increased synapse diversity. Credit Zhen Qui and Seth Grant University of Edinburgh. Credit: Zhen Qui and Seth Grant University of Edinburgh.

Lead researcher, Professor Seth Grant of the Centre for Clinical Brain Sciences at the University of Edinburgh, said: "The brain is the most complex thing we know of and understanding it at this level of detail is a momentous step forward.

"We believe that these findings will be instrumental to helping understand why the brain is susceptible to disease at different times of life and how the [brain](#) changes as we age."

More information: "A brain-wide atlas of synapses across the mouse lifespan" *Science* (2020). URL: [science.sciencemag.org/lookup/...1126/science.aba3163](https://science.sciencemag.org/lookup/doi/10.1126/science.aba3163)

Provided by University of Edinburgh

APA citation: Clues to ageing come to light in vivid snapshots of brain cell links (2020, June 11) retrieved 6 March 2021 from <https://medicalxpress.com/news/2020-06-clues-ageing-vivid-snapshots-brain.html>

This document is subject to copyright. Apart from any fair dealing for the purpose of private study or research, no part may be reproduced without the written permission. The content is provided for information purposes only.