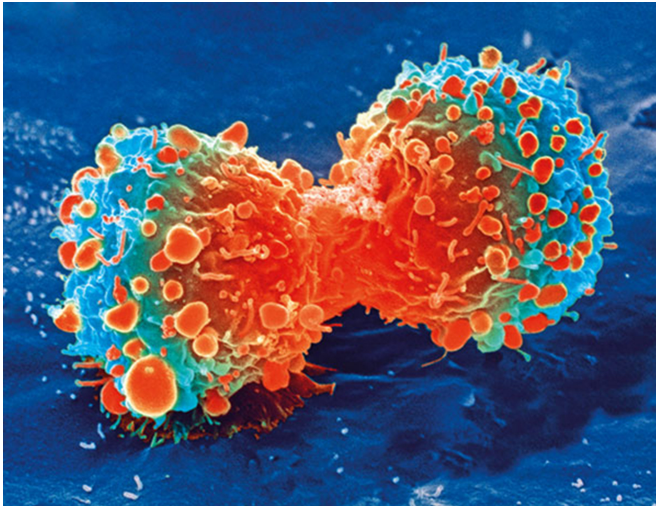


Bone marrow transplant study finds breast cancer risk in young women who received total body irradiation

3 August 2020, by Matt Windsor



Cancer cell during cell division. Credit: National Institutes of Health

A new study examining long-term outcomes of blood or marrow transplantation (BMT) found that patients who received total body irradiation (TBI) at age 30 or younger had a 4.5-fold increase in their risk of developing breast cancer later in life compared with the general population. The research, published in the *Journal of Clinical Oncology* on July 16, 2020, also found increased risk of breast cancer among women exposed to alkylating agents and anthracyclines as part of BMT.

"Women who received TBI were at a 1.5-fold higher risk of [breast](#) cancer when compared with the general population overall and at a 4.5-fold higher risk when the exposure occurred at age 30 years or younger," the authors write. Women who were exposed to TBI before age 30 had a 13.9 percent risk of being diagnosed with breast cancer by age 50, they found. By comparison, the average

American woman has a 2.38 percent risk of being diagnosed with breast cancer at age 50, according to the American Cancer Society.

"As a result of this study, we will be recommending that those transplanted at ages less than 30 years with TBI receive screening with mammography and breast MRI for early detection of breast cancer," said Smita Bhatia, M.D., senior author of the study and director of the Institute for Cancer Outcomes and Survivorship and a senior scientist in the O'Neal Comprehensive Cancer Center at the University of Alabama at Birmingham.

"We plan to further study how different aspects of TBI dose and delivery technique are related to secondary cancers," said Andrew McDonald, M.D., assistant professor in the Department of Radiation Oncology and first author of the study. "Our long-term goal is to improve treatment techniques for future patients undergoing BMT as part of their cancer care."

Uniquely vulnerable survivors

This research was based on the [BMT Survivor Study](#), which is enrolling more than 10,000 patients from the UAB, City of Hope and the University of Minnesota medical centers who underwent transplantation between 1974 and 2014 and survived for at least two years. Survival rates after BMT have been improving at the rate of 10 percent per decade, Bhatia said. But these BMT survivors are "uniquely vulnerable to long-term health problems," she said.

Some 23,000 patients received BMT in the United States in 2018, according to the [latest figures](#) from the Center for International Blood & Marrow Transplant Research. These are mainly patients with blood cancers such as leukemia, myeloma or

lymphoma that are progressing or who have a high risk of relapse. Total body irradiation and chemotherapeutic exposures such as alkylating agents and anthracyclines are used to prepare the patient for BMT.

"About 50 percent of [BMT] transplant patients overall receive total body irradiation, including a higher proportion of those patients who are younger," Bhatia said. The decision whether or not to use TBI as part of BMT "is based on the primary cancer that is being treated and the type of transplant that is performed," she noted. "TBI is used more often among those who receive transplants from their siblings or unrelated donors—known as allogeneic transplant—as compared to when they receive transplants from their own stem cells, known as autologous [transplant](#)."

Identifying patients at risk

Bhatia's institute is particularly interested in identifying predictive traits of cancer survivors at higher risk for long-term problems that could enable health care providers to tailor screenings and other interventions to these populations.

One under-studied outcome in BMT survivors is the magnitude of risk of breast cancer among [women](#) treated with TBI across all ages, Bhatia said. Early detection is known to improve breast-cancer outcomes and data on the women at highest risk to develop radiation-related breast cancer would allow health providers to screen these women at earlier ages.

Study details

Women who had a history of breast cancer before BMT, chest radiation before BMT or a mastectomy before BMT were not included in the study cohort. The researchers studied a total of 1,464 female BMT survivors—788 who had allogeneic transplants and 676 who had autologous transplants. TBI was used in 46 percent (660) of these patients. The median length of follow-up was 9.3 years. The most common diagnoses were acute myeloid leukemia or myelodysplastic syndrome (27.5 percent), non-Hodgkin lymphoma (23.3 percent), plasma cell

dyscrasias (18 percent), and chronic myelogenous leukemia (10.3 percent).

Thirty-seven of the women developed breast cancer during the study period—19 of the women who had allogeneic transplants and 18 who had autologous transplants. The women developed breast cancer at a median of 9.1 years after BMT. Breast cancers, inclusive of ductal carcinoma in situ, were identified from the completed BMTSS survey.

"To our knowledge, this is the first report of an increased risk of subsequent breast cancer after TBI among female autologous BMT survivors," the authors write. "The observation that exposure to alkylating agents and anthracyclines is associated with an increased risk of subsequent breast cancer has been noted in long-term outcomes studies of childhood cancer survivors; however, to our knowledge, this is the first report of this association among BMT survivors."

The researchers did not "observe a relationship between TBI dose and the risk of subsequent breast [cancer](#) in this study," they write. "But the distribution of TBI doses used for the women included in this study was narrow, and additional research is needed to determine if a dose-response relationship between TBI and subsequent [breast cancer](#) exists."

More information: Andrew M. McDonald et al. Total Body Irradiation and Risk of Breast Cancer After Blood or Marrow Transplantation: A Blood or Marrow Transplantation Survivor Study Report, *Journal of Clinical Oncology* (2020). [DOI: 10.1200/JCO.20.00231](#)

Provided by University of Alabama at Birmingham

APA citation: Bone marrow transplant study finds breast cancer risk in young women who received total body irradiation (2020, August 3) retrieved 27 January 2021 from <https://medicalxpress.com/news/2020-08-bone-marrow-transplant-breast-cancer.html>

This document is subject to copyright. Apart from any fair dealing for the purpose of private study or research, no part may be reproduced without the written permission. The content is provided for information purposes only.