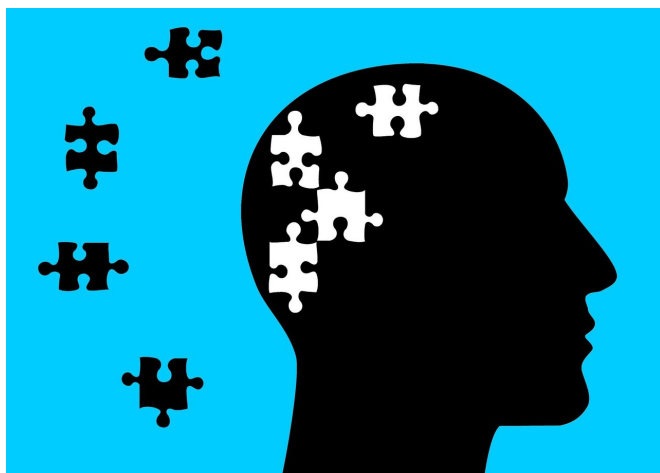


Right under your nose: A more convenient way to diagnose Alzheimer's disease

11 August 2020



Credit: CC0 Public Domain

Scientists from the Daegu Gyeongbuk Institute of Science and Technology, Republic of Korea, have discovered a new way to diagnose Alzheimer's disease by analyzing the levels of specific proteins in nasal discharge. This simple and inexpensive method could help in timely diagnosis of Alzheimer's disease in order to start treatment as soon as possible, thus delaying disease progression.

The Republic of Korea, like other countries with a rapidly aging population, is facing increasing numbers of patients with dementia, of which Alzheimer's disease (AD) is the most representative type. Unfortunately, AD has no complete cure yet, but some treatments have been proven to delay its progression. Of course, this means that timely diagnosis while the symptoms are still mild is essential to maximize a patient's quality of life.

However, currently available technologies for diagnosing AD are limited because they involve expensive machinery and invasive or inconvenient

procedures. Now, in a recent study published in *Scientific Reports*, scientists from Daegu Gyeongbuk Institute of Science and Technology, Korea, hint at a novel way of diagnosing AD in a much simpler way—collecting and analyzing specific proteins in [nasal discharge](#) samples.

Professor Cheil Moon, who led the study, explains how they came up with the idea: "In 2017, we found that olfactory dysfunction occurred in the early stages of AD in mice and suggested that the cause of the symptoms was induced by soluble species of amyloid- β (A β) oligomer accumulations in the peripheral olfactory system. We hypothesized that soluble A β oligomers could be detectable in nasal discharge and that they may be a useful parameter to monitor disease progression." To test their hypothesis, they gathered and compared nasal discharge samples from 39 patients with AD and 21 people from an age-matched control group.

They found that the levels of two particular A β oligomers (the aggregated forms of A β implicated as characteristic of Alzheimer's) were consistently higher in patients from the AD group. What's more, the levels of the "soluble" form of this protein could be used to not only separate healthy subjects from patients with AD, but also predict the onset and progression of AD over a three-year period.

Although further research will be required to better understand the link between A β oligomers in nasal discharge and the cognitive impairments related to AD, the results are certainly promising. Prof Moon remarks, "Routine nasal [discharge](#) screenings would be a better option to screen for AD because of its various advantages, such as its relatively low cost and non-invasive nature. The results of our study introduce a novel and simple approach to assess AD progression."

This new diagnostic technique will hopefully help in simpler and faster detection of Alzheimer's and improving the [disease](#) outcome, thus bringing much

needed relief to millions suffering from the Alzheimer's worldwide.

More information: Seung-Jun Yoo et al. Longitudinal profiling of oligomeric A β in human nasal discharge reflecting cognitive decline in probable Alzheimer's disease, *Scientific Reports* (2020). DOI: [10.1038/s41598-020-68148-2](https://doi.org/10.1038/s41598-020-68148-2)

Provided by Daegu Gyeongbuk Institute of Science and Technology

APA citation: Right under your nose: A more convenient way to diagnose Alzheimer's disease (2020, August 11) retrieved 31 October 2020 from <https://medicalxpress.com/news/2020-08-nose-convenient-alzheimer-disease.html>

This document is subject to copyright. Apart from any fair dealing for the purpose of private study or research, no part may be reproduced without the written permission. The content is provided for information purposes only.