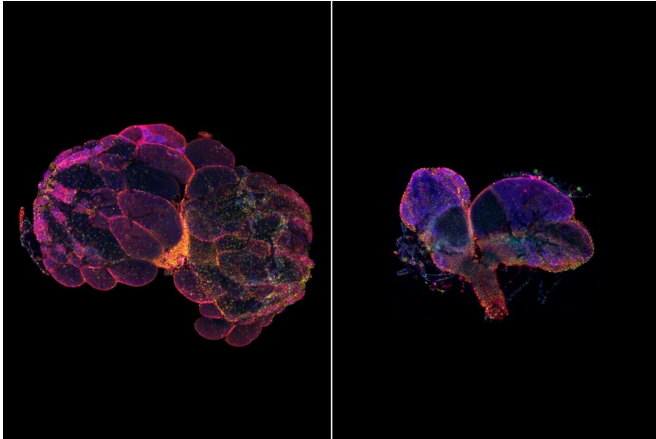


# Genetic mutations may be linked to infertility, early menopause

31 August 2020, by Julia Evangelou Strait



Researchers at Washington University School of Medicine in St. Louis have identified a gene that plays an important role in fertility across multiple species. Pictured is a normal fruit fly ovary (left) and a fruit fly ovary with this gene dialed down (right). Male and female animals missing this gene had substantially defective reproductive organs. The study could have implications for understanding human infertility and early menopause. Credit: Yonit Tsatskis/McNeill Lab

A new study from Washington University School of Medicine in St. Louis identifies a specific gene's previously unknown role in fertility. When the gene is missing in fruit flies, roundworms, zebrafish and mice, the animals are infertile or lose their fertility unusually early but appear otherwise healthy. Analyzing genetic data in people, the researchers found an association between mutations in this gene and early menopause.

The study appears Aug. 28 in the journal *Science Advances*.

The [human gene](#)—called [nuclear envelope membrane protein 1 \(NEMP1\)](#)—is not widely studied. In animals, mutations in the equivalent gene had been linked to impaired eye

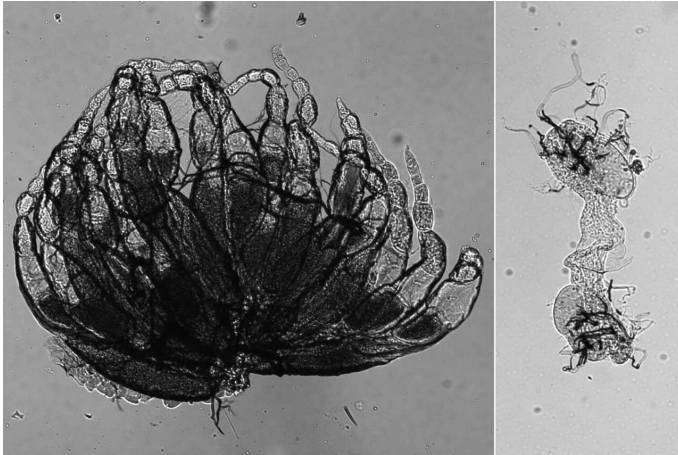
development in frogs.

The researchers who made the new discovery were not trying to study fertility at all. Rather, they were using genetic techniques to find [genes](#) involved with eye development in the early embryos of [fruit flies](#).

"We blocked some gene expression in fruit flies but found that their eyes were fine," said senior author Helen McNeill, Ph.D., the Larry J. Shapiro and Carol-Ann Uetake-Shapiro Professor and a BJC Investigator at the School of Medicine. "So, we started trying to figure out what other problems these animals might have. They appeared healthy, but to our surprise, it turned out they were completely sterile. We found they had substantially defective reproductive organs."

Though it varied a bit by species, males and females both had fertility problems when missing this gene. And in females, the researchers found that the envelope that contains the egg's nucleus—the vital compartment that holds half of an organism's chromosomes—looked like a floppy balloon.

"This gene is expressed throughout the body, but we didn't see this floppy balloon structure in the nuclei of any other cells," said McNeill, also a professor of developmental biology. "That was a hint we'd stumbled across a gene that has a specific role in fertility. We saw the impact first in flies, but we knew the proteins are shared across species. With a group of wonderful collaborators, we also knocked this gene out in worms, zebrafish and mice. It's so exciting to see that this protein that is present in many cells throughout the body has such a specific role in fertility. It's not a huge leap to suspect it has a role in people as well."



Researchers at Washington University School of Medicine in St. Louis have identified a gene that plays an important role in fertility across multiple species. On the left is a normal fruit fly ovary with hundreds of developing eggs. On the right is a fruit fly ovary that is totally missing the NEMP gene. It is poorly developed and no eggs are visible. Credit: Yonit Tsatskis /McNeill Lab

To study this floppy balloon-like nuclear envelope, the researchers used a technique called [atomic force microscopy](#) to poke a needle into the cells, first penetrating the [outer membrane](#) and then the nucleus's membrane. The amount of force required to penetrate the membranes gives scientists a measure of their stiffness. While the outer membrane was of normal stiffness, the nucleus's membrane was much softer.

"It's interesting to ask whether stiffness of the nuclear envelope of the egg is also important for fertility in people," McNeill said. "We know there are variants in this gene associated with early menopause. And when we studied this defect in mice, we see that their ovaries have lost the pool of egg cells that they're born with, which determines fertility over the lifespan. So, this finding provides a potential explanation for why women with mutations in this gene might have early menopause. When you lose your stock of eggs, you go into menopause."

McNeill and her colleagues suspect that the nuclear envelope has to find a balance between being pliant enough to allow the chromosomes to align as

they should for reproductive purposes but stiff enough to protect them from the ovary's stressful environment. With age, ovaries develop strands of collagen with potential to create mechanical stress not present in embryonic ovaries.

"If you have a softer nucleus, maybe it can't handle that environment," McNeill said. "This could be the cue that triggers the death of eggs. We don't know yet, but we're planning studies to address this question."

Over the course of these studies, McNeill said they found only one other problem with the mice missing this specific gene: They were anemic, meaning they lacked red blood cells.

"Normal adult red blood cells lack a nucleus," McNeill said. "There's a stage when the nuclear envelope has to condense and get expelled from the young red blood cell as it develops in the bone marrow. The red blood cells in these mice aren't doing this properly and die at this stage. With a floppy nuclear envelope, we think young [red blood cells](#) are not surviving in another mechanically stressful situation."

The researchers would like to investigate whether women with fertility problems have mutations in NEMP1. To help establish whether such a link is causal, they have developed [human embryonic stem cells](#) that, using CRISPR gene-editing technology, were given specific mutations in NEMP1 listed in genetic databases as associated with infertility.

"We can direct these stem [cells](#) to become eggs and see what effect these mutations have on the nuclear envelope," McNeill said. "It's possible there are perfectly healthy women walking around who lack the NEMP protein. If this proves to cause infertility, at the very least this knowledge could offer an explanation. If it turns out that women who lack NEMP are infertile, more research must be done before we could start asking if there are ways to fix these mutations—restore NEMP, for example, or find some other way to support nuclear envelope stiffness."

**More information:** Yonit Tsatskis et al, The

NEMP family supports metazoan fertility and nuclear envelope stiffness, *Science Advances* (2020). DOI: [10.1126/sciadv.abb4591](https://doi.org/10.1126/sciadv.abb4591)

Provided by Washington University School of Medicine

APA citation: Genetic mutations may be linked to infertility, early menopause (2020, August 31) retrieved 8 March 2021 from

<https://medicalxpress.com/news/2020-08-genetic-mutations-linked-infertility-early.html>

*This document is subject to copyright. Apart from any fair dealing for the purpose of private study or research, no part may be reproduced without the written permission. The content is provided for information purposes only.*