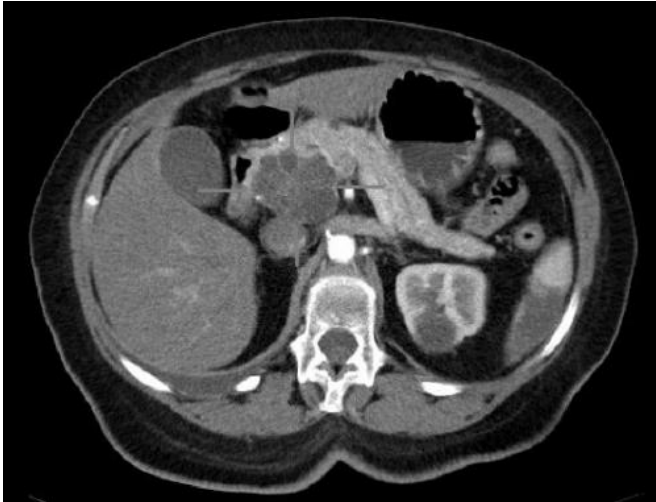


Exploring therapeutic interventions for pancreatic cancer

23 September 2020



Axial CT image with i.v. contrast. Macrocystic adenocarcinoma of the pancreatic head. Credit: public domain

Pancreatic cancer is a devastating disease due to its often late diagnosis and its unresponsiveness to current therapies. It is estimated that 57,600 new cases were diagnosed in 2020 in the U.S., with a dismal 10% five-year survival rate.

For a study published in the journal *Current Developments in Nutrition*, a research team led by CUNY SPH Associate Professor Dr. Ghada Soliman investigated the impact of the mechanistic Target of Rapamycin (mTOR) nutrient-sensitive pathway inhibition, and synergism with the [antidiabetic drug](#), metformin on [pancreatic cancer](#). The results showed that the combined treatment led to reduced pancreatic tumor burden, altered metabolic profile, and is better tolerated than the single-drug administration in an orthotopic pancreatic cancer model.

The mTOR pathway integrates nutrition status, [energy level](#), and environmental cues to coordinate

cell metabolism and physiological homeostasis.

Drugs inhibiting mTOR catalytic functions serve as tools to investigate the molecular mechanisms of the mTOR protein function and the metabolic and health outcomes. Dr. Soliman and team hacked the mTORC1/mTORC2 pathways with drugs to determine their functionality and to advance chronic disease therapeutics.

The immediate usefulness of mTOR inhibition and interactions with metformin is in decreasing the pancreatic tumor burden and providing a rationale for the combined drug applications in pancreatic cancer clinical trials.

"Ultimately, this study can help us understand and gain insight into how mTOR controls nutrient metabolism and use such information to develop therapeutic interventions in the treatment of pancreatic diseases, type 2 diabetes, and the associated cardiometabolic complications," Dr. Soliman says.

More information: Ghada A Soliman et al. The Synergistic Effect of an ATP-Competitive Inhibitor of mTOR and Metformin on Pancreatic Tumor Growth, *Current Developments in Nutrition* (2020). DOI: [10.1093/cdn/nzaa131](https://doi.org/10.1093/cdn/nzaa131)

Provided by The City University of New York

APA citation: Exploring therapeutic interventions for pancreatic cancer (2020, September 23) retrieved 11 May 2021 from <https://medicalxpress.com/news/2020-09-exploring-therapeutic-interventions-pancreatic-cancer.html>

This document is subject to copyright. Apart from any fair dealing for the purpose of private study or research, no part may be reproduced without the written permission. The content is provided for information purposes only.