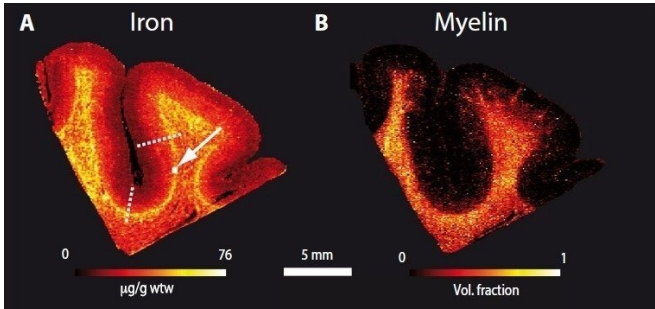


# What lies between grey and white in the brain

19 October 2020



The team created very high resolution maps of the white-grey matter border across the entire living brain. Credit: MPI CBS

Traditionally, neuroscience regards the brain as being made up of two basic tissue types. Billions of neurons make up the gray matter, forming a thin layer on the brain's surface. These neuronal cells are interlinked in a mindboggling network by hundreds of millions of white matter connections, running in bundles, deeper in the brain. Until very recently, not much was known about the interface between the white and gray matter—the so-called superficial white matter—because methods were lacking to study it in living human brains. Yet, previous investigations had suggested the region to be implicated in devastating conditions such as Alzheimer's disease and autism. Now a multidisciplinary team led by Nikolaus Weiskopf from the Max Planck Institute for Human Cognitive and Brain Sciences has succeeded in making the superficial white matter visible in the living human brain.

"We demonstrated that the superficial white matter contains a lot of iron. It is known that iron is necessary for the process of myelination," explains Evgeniya Kirilina, first author of the study published in *Science Advances*. Myelin is what makes the white matter white. It's the fatty coating of nerve

cell axons that speeds up transmission of information through the brain. The myelination process can occur throughout the lifespan but is predominant during development. In fact, the largest concentration of iron the researchers found was in the superficial white matter in regions of the frontal cortex, which happens to be the slowest developing structure in the human brain. Incredibly, the human frontal cortex is not fully myelinated until the fourth decade of life.

The key to the new method is MRI (Magnetic Resonance Imaging) but at very high field strength. While typical clinical MRI scanners work at 1.5 or 3 Tesla, in terms of the strength of the magnetic field, the Max Planck Institute for Human Cognitive and Brain Sciences houses a powerful 7 Tesla scanner. This, in combination with advanced biophysical model, allowed the team to create very high resolution maps of the white-gray matter border across the entire living brain. The accuracy of their submillimetre maps was assessed against classic and advanced histological methods involving physical dissection and analysis of post mortem brains.

The new method promises many further insights into the organization of the interface between white and gray matter. Evgeniya Kirilina adds, "We hope the method can be used to increase our understanding of [brain](#) development as well as pathological conditions involving the superficial white matter."

**More information:** Evgeniya Kirilina et al, Superficial white matter imaging: Contrast mechanisms and whole-brain in vivo mapping, *Science Advances* (2020). [DOI: 10.1126/sciadv.aaz9281](https://doi.org/10.1126/sciadv.aaz9281)

Provided by Max Planck Society

APA citation: What lies between grey and white in the brain (2020, October 19) retrieved 19 January 2021 from <https://medicalxpress.com/news/2020-10-lies-grey-white-brain.html>

*This document is subject to copyright. Apart from any fair dealing for the purpose of private study or research, no part may be reproduced without the written permission. The content is provided for information purposes only.*