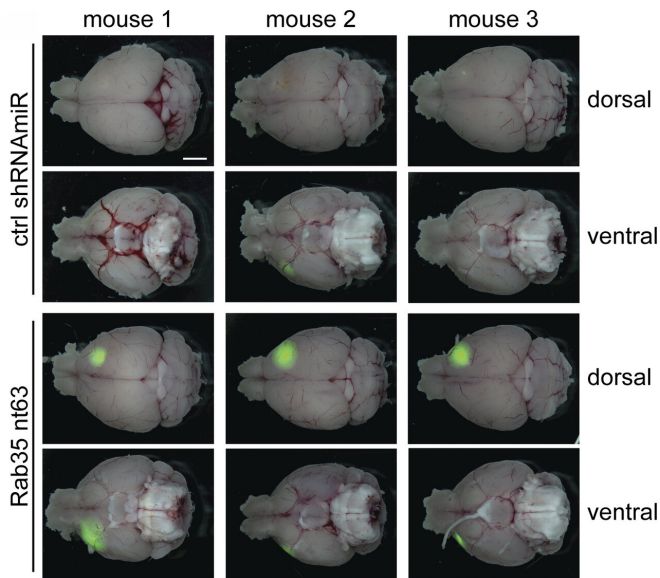


Researchers link cellular transport pathway to aggressive brain cancer

14 January 2021



Compared with control mice (top two rows), brain tumors (green) grow faster in the absence of Rab35 (bottom two rows). Credit: ©2021 Kulasekaran et al. Originally published in *Journal of Cell Biology*. 10.1083/jcb.202004229

Researchers at McGill University have identified a new cellular pathway that limits the growth and spread of brain tumors by controlling the recycling of cell surface receptor proteins. The study, which will be published January 14 in the *Journal of Cell Biology (JCB)*, suggests that the pathway, which involves a protein called Rab35, is defective in many patients with glioblastoma and that restoring Rab35's activity could be a new therapeutic strategy for this deadly form of brain cancer.

Glioblastoma is the most aggressive type of brain cancer, and because it is largely untreatable, the average patient dies within 14 months of diagnosis. Like in other cancers, the proliferation and spread of [glioblastoma](#) cells depends on various receptor proteins on the outside of the cell.

The levels of these receptor proteins are controlled by cellular transport pathways that internalize the [receptors](#) and then either degrade them or return them to the cell surface.

In normal, [healthy cells](#), these transport pathways are regulated by a class of protein known as small GTPases. "We previously demonstrated that the levels of a small GTPase called Rab35 are decreased in human glioblastomas," says Peter S. McPherson, Director of The Neurodegenerative Disease Research Group at The Neuro (Montreal Neurological Institute-Hospital), McGill University. "We thus sought to investigate the role of Rab35 in the progression of glioblastoma."

McPherson and colleagues found that reducing the levels of Rab35 increased the growth and spread of brain tumors in mice, thereby shortening the animals' life span. In contrast, elevating Rab35 levels reduced [tumor growth](#) and prolonged the animals' survival.

The researchers discovered that Rab35 is activated by a pathway involving another small GTPase called Arf5. Together, Arf5 and Rab35 appear to control the transport of various cell surface receptors, thereby restricting the ability of cells to migrate and invade through tissues, and limiting the ability of brain tumor-initiating cells to replicate.

One of the cell surface receptors controlled by this pathway is the signaling protein [epidermal growth factor receptor \(EGFR\)](#). In glioblastoma [cells](#) lacking Rab35, EGFR is increasingly recycled to the cell surface instead of being degraded, enhancing the receptor's signaling activity. Inhibiting EGFR with the cancer drug erlotinib reduced the production of a protein called SPOCD1, which is known to promote the proliferation and/or metastasis of multiple cancers.

McPherson and colleagues suggest that restoring the activity of Rab35 might limit the development of

glioblastomas by altering the degradation and recycling of multiple [cell surface](#) receptors, including EGFR.

"Rab GTPases are emerging as an important new set of drug targets in cancer," McPherson says.

"Our study reveals an unprecedented link between Rab and Arf proteins and identifies new loci for therapeutic intervention in glioblastoma."

More information: Kulasekaran et al., 2021. *J.*

Cell Biol. [rupress.org/jcb/article-lookup ...](https://rupress.org/jcb/article-lookup...)

[0.1083/jcb.202004229](https://doi.org/10.1083/jcb.202004229)

Provided by Rockefeller University Press

APA citation: Researchers link cellular transport pathway to aggressive brain cancer (2021, January 14) retrieved 23 September 2021 from <https://medicalxpress.com/news/2021-01-link-cellular-pathway-aggressive-brain.html>

This document is subject to copyright. Apart from any fair dealing for the purpose of private study or research, no part may be reproduced without the written permission. The content is provided for information purposes only.