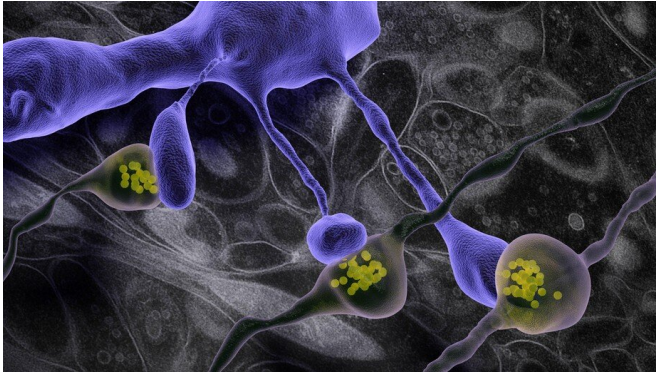


Snap freezing reveals a truer structure of brain connections

18 January 2021, by Graham Knott, Nik Papageorgiou



3-D model of dendritic spines (purple) making synapses with axons containing vesicles (yellow). Background shows electron microscope image of brain tissue. Credit: Graham Knott (EPFL)

Scientists at EPFL have used a snap-freezing method to reveal the true structure of the connections that join neurons together in the adult brain.

Most synaptic connections in the [adult brain](#) are situated on dendritic spines; small, micrometer-long, protrusions extending from the neurons' surface. The spines' exact size and shape determine how well signals are passed from one neuron to another.

These details become very important when neuroscientists want to model brain circuits or understand how information is transmitted between neurons across the brain's neuronal circuits. However, their [small size](#) and the difficulties in preserving brain tissue in its natural state have always left the question open as to what the true structure of the dendritic spine is.

Scientists from EPFL's School of Life Sciences have now used a snap-freezing method of liquid nitrogen jets, combined with very high pressures,

to instantaneously preserve small pieces of [brain tissue](#). The researchers, from the labs of Graham Knott and Carl Petersen, then used high-resolution, 3-D imaging with [electron microscopes](#) to reveal how the true dendritic spine structure was similar to that shown in previous studies, except for one important aspect: The instant freezing method showed dendritic spines with significantly thinner necks.

This finding validates a considerable body of theoretical and functional data going back many years, which shows that [dendritic spines](#) are chemical, as well as electrical, compartments isolated from the rest of the neuron by a thin and high-resistance neck. Variations in the neck diameter have an important impact on how a synapse influences the rest of the neuron.

"As well as revealing the true shape of these important brain structures, this work highlights the usefulness of rapid freezing methods and electron microscopy for obtaining a more detailed view of the architecture of cells and tissues," says Graham Knott.

More information: Hiromi Tamada et al. Ultrastructural comparison of dendritic spine morphology preserved with cryo and chemical fixation, *eLife* (2020). [DOI: 10.7554/eLife.56384](https://doi.org/10.7554/eLife.56384)

Provided by Ecole Polytechnique Federale de Lausanne

APA citation: Snap freezing reveals a truer structure of brain connections (2021, January 18) retrieved 15 April 2021 from <https://medicalxpress.com/news/2021-01-snap-reveals-truer-brain.html>

This document is subject to copyright. Apart from any fair dealing for the purpose of private study or research, no part may be reproduced without the written permission. The content is provided for information purposes only.