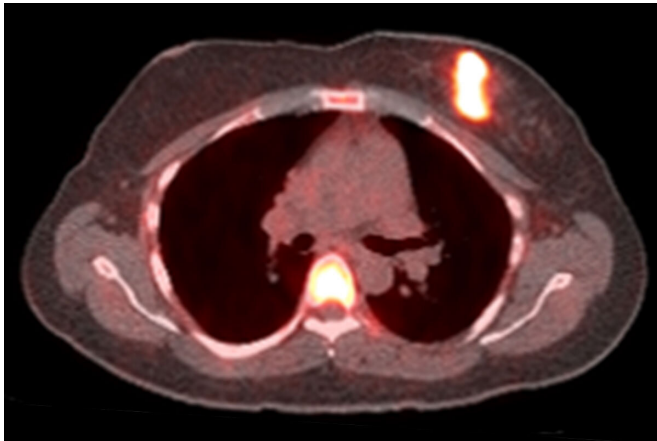


Imaging identifies breast cancer patients unlikely to benefit from hormone therapy

2 February 2021



Bright spots indicate that cancer cells have responded to a one-day challenge with estrogen in this positron emission tomography (PET) scan of a woman with breast cancer. In a small study, researchers at Washington University School of Medicine in St. Louis found that only women whose tumors responded to estrogen challenge benefited from hormone therapy. The findings could help doctors choose the treatments most likely to help their patients. Credit: Farrokh Dehdashti

Hormone therapy commonly is given as a targeted treatment for women whose cancer cells carry receptors for estrogen. But the therapy only works for about half of all patients. Until now, there hasn't been a good way to reliably predict who will benefit and who will not.

Researchers at Washington University School of Medicine in St. Louis have shown they can distinguish patients likely or unlikely to benefit from [hormone therapy](#) using an imaging test that measures the function of the [estrogen receptors](#) in their [cancer](#) cells. In a small phase 2 clinical trial, the researchers showed that the cancers of all patients with working estrogen receptors remained stable or improved on [hormone](#) therapy, and

progressed in all women with nonfunctional estrogen receptors. The findings, published Feb. 2 in *Nature Communications*, could help doctors choose among treatment options and reduce the chances that women would receive a therapy unlikely to help.

"If breast cancer in a patient is estrogen receptor-positive, doctors will usually recommend hormone therapy even though they know it will only work for slightly more than half the patients," said senior author Farrokh Dehdashti, MD, the Drs. Barry A. and Marilyn J. Siegel Professor of Radiology at Mallinckrodt Institute of Radiology (MIR). "When hormone therapy works, it's typically quite effective, and it has milder side effects than some other therapies, and that's why oncologists and patients want to try it first. But we need to narrow down who is likely to benefit, and there really hasn't been a reliable test to accomplish that."

Approximately four out of five breast cancers—some 250,000 per year in the United States—are labeled "estrogen receptor-positive," meaning that the cancer cells carry estrogen receptors and the tumor grows in response to the naturally occurring hormone estrogen. Hormone therapy is designed to stop the effects of estrogen on the tumor.

A variety of drugs can be prescribed as hormone therapy, and doctors choose a treatment regimen depending on the patient and the specifics of that person's disease. Aromatase inhibitors prevent the body from making estrogen and are usually the first treatment chosen for hormone therapy. Fulvestrant blocks the estrogen receptor on cancer cells. These drugs usually are given to postmenopausal women. Pre-menopausal women often are given different hormone therapies because their ovaries still are producing large amounts of estrogen.

Doctors have long suspected that the difference between women who respond to hormone therapy and those who don't comes down to whether the

estrogen receptors on their cancer cells are working treatment properly. If the receptors are present but nonfunctional, targeting them is unlikely to have much effect.

Dehdashti and colleagues, including co-authors Barry A. Siegel, MD, a professor of radiology, and Cynthia Ma, MD, Ph.D., a professor of medicine, set about measuring the functionality of estrogen receptors by taking advantage of a link between the estrogen receptor and a receptor for another hormone: progesterone. When estrogen receptors are stimulated, cells respond by increasing the number of progesterone receptor molecules on their surfaces.

Co-author John Katzenellenbogen, Ph.D., a chemist at the University of Illinois, designed an imaging agent to probe the number of progesterone receptors on the surface of [cancer cells](#), in collaboration with the late Michael Welch, Ph.D., then a professor of radiology at Washington University. The compound, 21-[18F] fluorofuranylprogesterone (FFNP), attaches to progesterone receptors and can be detected with a positron emission tomography (PET) scan. When more progesterone receptors are present, the PET signal is higher.

The researchers recruited 43 [postmenopausal women](#) with estrogen receptor-positive breast cancer. Most (86%) had metastatic disease, while 14% had locally advanced or locally recurrent disease. The majority (72%) already had received some form of treatment before the start of the study. Their prior treatment was most often a hormone therapy-based regimen.

The women underwent a PET scan using FFNP, followed by three doses of estrogen over a 24-hour period, and then a second PET scan a day after the estrogen treatment.

For 28 women, the PET signal in the tumor increased considerably after exposure to estrogen, indicating that their estrogen receptors were working and had responded to the hormone by triggering an increase in progesterone receptor numbers. Fifteen women showed little to no change in progesterone receptor numbers after estrogen

Then, the researchers followed the participants for six months or longer as they underwent hormone therapy as recommended by their individual oncologists. The disease of all 15 women whose tumors had not responded to estrogen worsened within six months. Of the women whose tumors had responded, 13 remained stable and 15 improved.

"The goal of therapy is to control or improve disease, so if the therapy is likely to be ineffective, it should not be given to a patient," said Dehdashti, who is also senior vice chair and division director of nuclear medicine at MIR. "We observed 100% agreement between the response to estrogen challenge and the response to hormone therapy, even though the participants were on a variety of treatment regimens. This method should work for any [therapy](#) that depends on a functional [estrogen receptor](#), and it could provide valuable information to oncologists deciding how best to treat their patients."

The researchers are now in the process of setting up a larger phase 2 clinical trial with collaborators at other institutions to verify their results.

More information: Dehdashti F, Wu N, Ma CX, Naughton MJ, Katzenellenbogen JA, Siegel BA. Association of PET-Based Estradiol-challenge Test for Breast Cancer Progesterone Receptors with Response to Endocrine Therapy. *Nature Communications*. Feb. 2, 2021. [DOI: 10.1038/s41467-020-20814-9](#)

Provided by Washington University School of Medicine

APA citation: Imaging identifies breast cancer patients unlikely to benefit from hormone therapy (2021, February 2) retrieved 23 April 2021 from <https://medicalxpress.com/news/2021-02-imaging-breast-cancer-patients-benefit.html>

This document is subject to copyright. Apart from any fair dealing for the purpose of private study or research, no part may be reproduced without the written permission. The content is provided for information purposes only.