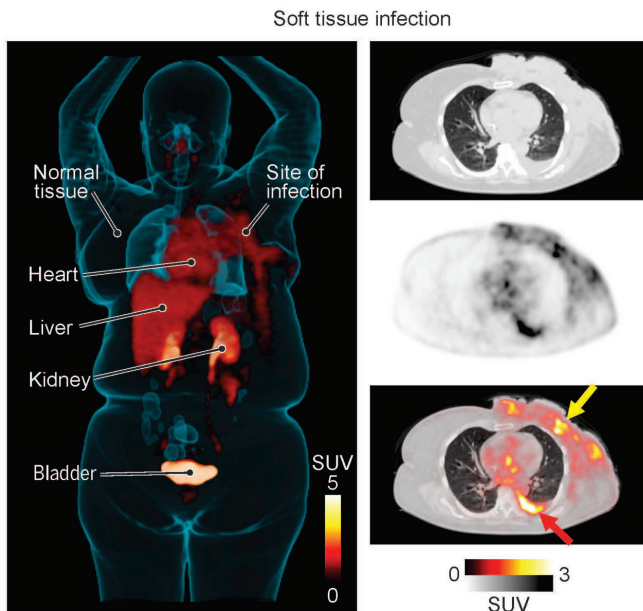


# Exploiting bacterial 'sweet tooth' may help image and diagnose infections

15 April 2021



Three-dimensional imaging showing soft tissue infection with Enterobacteriales in a female patient. Credit: A.A. Ordonez et al., *Science Translational Medicine* (2021)

In the movie *Mary Poppins*, the title character sings that "a spoonful of sugar helps the medicine go down." Now, Johns Hopkins Medicine researchers have shown how a radioactive sugar—combined with a widely used imaging technology—could soon help physicians make the medicine work better by enabling them to rapidly detect and monitor infections from the largest group of bacterial pathogens threatening humans.

The new imaging tool uses positron emission tomography—commonly known as a PET scan—to noninvasively find and track dangerous infections from the microbial family Enterobacteriales, a group that includes the *Escherichia coli* strains that cause food poisoning; *Klebsiella pneumoniae*, a cause of pneumonia and a severe threat to patients weakened from COVID-19; and *Yersinia pestis*, the

scourge behind the "Black Death" pandemic of plague in the 14th century that wiped out 75% of the world's population.

Enterobacteriales [bacteria](#) also have been tagged by the U.S. Centers for Disease Control and Prevention as "urgent and serious antibiotic resistance threats" because of their frequent mutations to drug-resistant strains.

The new diagnostic tool is described in a paper published April 14, 2021, in *Science Translational Medicine*. It emerged from a creative combination of existing PET scan technology—a sophisticated 3D visualization system for imaging diseases such as cancer—with sorbitol, a molecule used in making sugar-free foods. The method capitalizes on the fondness for sorbitol of Gram-negative bacteria (a classification of bacteria based on their resistance to a specific staining procedure) such as Enterobacteriales and the fact that other microorganisms, cancers and human cells do not absorb it.

"We converted an already available radioactive imaging tracer into an isotope-tagged sorbitol molecule that would light up clusters of Gram-negative bacteria within the body during a PET scan," says study senior author Sanjay Jain, M.D., professor of pediatrics, and radiology and radiological medicine at the Johns Hopkins University School of Medicine; and professor of international health at the Johns Hopkins Bloomberg School of Public Health.

In a previous study, the researchers demonstrated that PET scans using their novel sugar tracer—chemically known as 2-deoxy-2 [18F] fluoro-D-sorbitol (18F-FDS)—successfully detected Enterobacteriales infections in mice. This time, the team conducted a [clinical study](#) to evaluate the safety and effectiveness of the 18F-FDS PET technique. The work was done in collaboration with scientists from the Fundación Cardiovascular de

Colombia-Hospital Internacional de Colombia (Piedecuesta, Colombia).

A total of 71 PET scans were performed in 31 patients, 18 of whom had previously confirmed Enterobacterales infections using traditional blood cultures. The 18F-FDS PET imaging technique was able to detect and localize Enterobacterales infections at multiple body sites, and distinguish them from the patients with infections caused by other bacteria and the ones whose [infection](#)-like symptoms were the result of cancer.

The tracer was well tolerated by all of the participants and showed no adverse effects.

Because the 18F-FDS PET imaging technique has shown that it can immediately detect the presence of Enterobacterales bacteria deep inside the body—compared with laboratory tests which can take two to three days to confirm an infection—the researchers feel that their method can play an important role in optimizing [antibiotic treatments](#) and preventing the rise of dangerous antibiotic-resistant bacteria strains.

"Using broad-spectrum antibiotics to treat a suspected bacterial infection before an infection is confirmed is sometimes like firing a cannonball to kill a fly," says study lead author Alvaro Ordonez, M.D., assistant professor of pediatrics at the Johns Hopkins University School of Medicine. "While such treatment is clinically justified in patients with serious infections of unknown origin, it can promote bacterial resistance to the drugs. Knowing quickly which organism is causing the problem can enable clinicians to target the antibiotic best suited for that bacteria, and that is where our new imaging system could make a difference."

The researchers also say that the 18F-FDS PET imaging technique also can be used to monitor the effectiveness of antibiotic therapy, as they showed for 13 of their clinical trial participants with Enterobacterales infections.

"We scanned the patients before and after their course of treatment," says Ordonez. "In those who did not respond well because of the presence of drug-resistant bacteria, the 18F-FDS signal

remained high with the final scans. On the contrary, it decreased in those patients whose infections were significantly treated."

Jain says that larger clinical trials are needed to validate the findings of his team's latest study. "However, we're excited that our data support the role of 18F-FDS PET as a viable diagnostic and treatment monitoring tool," he says.

**More information:** A.A. Ordonez et al., "Imaging Enterobacterales infections in patients using pathogen-specific positron emission tomography," *Science Translational Medicine* (2021). [stm.sciencemag.org/lookup/doi/10.1126/scitranslmed.abe9805](https://stm.sciencemag.org/lookup/doi/10.1126/scitranslmed.abe9805)

Provided by Johns Hopkins University School of Medicine

APA citation: Exploiting bacterial 'sweet tooth' may help image and diagnose infections (2021, April 15) retrieved 21 June 2021 from <https://medicalxpress.com/news/2021-04-exploiting-bacterial-sweet-tooth-image.html>

*This document is subject to copyright. Apart from any fair dealing for the purpose of private study or research, no part may be reproduced without the written permission. The content is provided for information purposes only.*