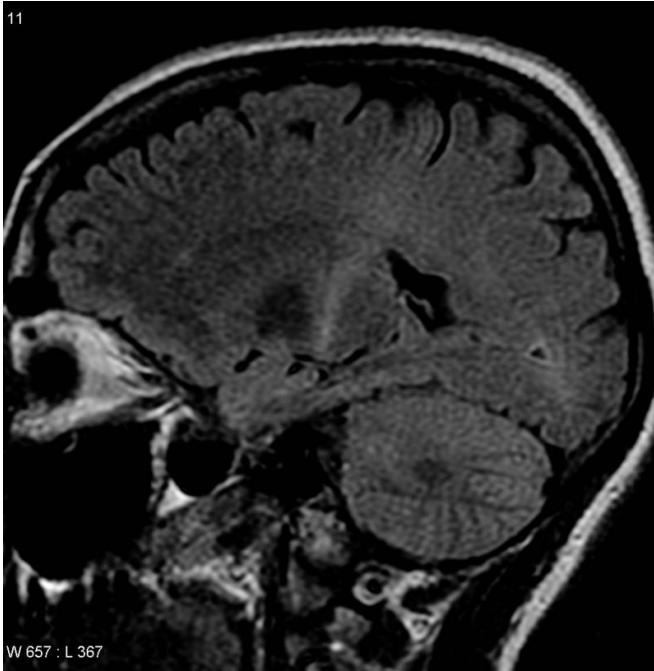


New type of cell contributes to increased understanding of ALS

15 April 2021



An MRI with increased signal in the posterior part of the internal capsule which can be tracked to the motor cortex consistent with the diagnosis of ALS. Credit: Frank Gaillard/Wikipedia

The causes of the serious muscle disease ALS still remain unknown. Now, researchers at Karolinska Institutet and KTH Royal Institute of Technology, among others, have examined a type of cell in the brain blood vessels that could explain the unpredictable disease origins and dynamics. The results indicate a hitherto unknown connection between the nervous and vascular systems. The study, which is published in *Nature Medicine*, has potential implications for earlier diagnoses and future treatments.

ALS ([amyotrophic lateral sclerosis](#)) is a neurodegenerative disease of the motor neurons that eventually causes muscular atrophy, paralysis and death. There is currently no cure.

The cause of ALS is only understood in the 5 to 10% of patients who have an inherited form of the disease. To help in its early detection and to develop efficacious therapies, researchers are avidly seeking a clearer picture of the disease's pathogenesis.

ALS patients demonstrate high variability of age at onset, non-motor symptoms and survival. In recent years, research has shifted focus from neurological explanations to these differences, and has taken an interest, for example, in the cerebral vascular system, which delivers oxygen and nutrients to brain tissue.

Researchers at Karolinska Institutet, KTH Royal Institute of Technology, SciLifeLab, London's Imperial College and Umeå University have now studied whether a possible connection exists between perivascular fibroblast cells and the time of disease onset and survival.

Studies on mice with ALS showed that genes for perivascular fibroblasts were active already in an early asymptomatic stage of the disease and months before neuronal damage began to appear.

The researchers then examined the levels of a large number of potential marker proteins in the plasma of 574 patients with a recent ALS diagnosis and 504 healthy controls from four countries.

Their results suggest a correlation between elevated levels of the protein marker SPP1 for perivascular fibroblasts and an aggressive disease process and shorter survival. This is the first time a connection between the vascular and nervous systems in sporadic ALS has been observed.

"It is exciting to see how the results from our protein profiling could be connected to the long range of cellular and molecular analysis that we have done and reveal the identified association to [disease progression](#)," says the first author, Anna Månberg,

researcher at the Department of Protein Science, at KTH and SciLifeLab.

"Our results indicate that vascular events are a factor in the disease's heterogeneity and can improve our knowledge of early stage ALS," says the study's last and senior author Sebastian Lewandowski, researcher at the Department of Clinical Neuroscience and the Centre for Molecular Medicine at Karolinska Institutet. "More studies are now needed on vascular [disease](#) mechanisms for better prognostic tools and future treatments."

The research was financed by the Olle Engkvist Foundation, the Ulla-Carin Lindquist Foundation for ALS Research, the Swedish FTD Initiative and others, and received strategic support from the Knut and Alice Wallenberg Foundation and the Erling-Persson Family Foundation for the KTH Center for Applied Precision Medicine (KCAP).

More information: Altered perivascular fibroblast activity precedes ALS disease onset, *Nature Medicine* (2021). [DOI: 10.1038/s41591-021-01295-9](#)

Provided by Karolinska Institutet

APA citation: New type of cell contributes to increased understanding of ALS (2021, April 15) retrieved 15 June 2021 from <https://medicalxpress.com/news/2021-04-cell-contributes-als.html>

This document is subject to copyright. Apart from any fair dealing for the purpose of private study or research, no part may be reproduced without the written permission. The content is provided for information purposes only.