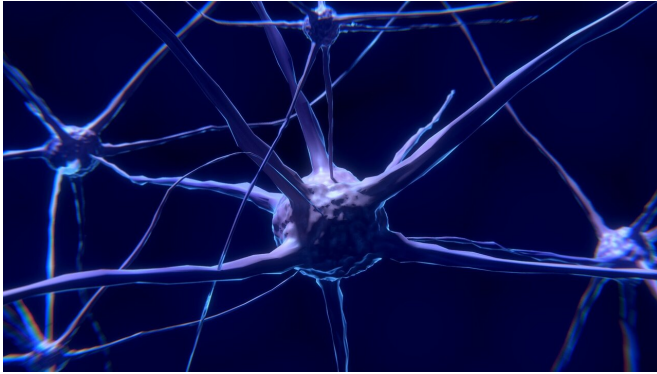


Neural network helps doctors detect epilepsy-causing malformation in the brain

27 July 2021



Credit: Pixabay/CC0 Public Domain

Skoltech researchers and their colleagues from the Pirogov National Medical and Surgical Center and the Kulakov National Medical Research Center for Obstetrics, Gynecology and Perinatology have used a convolutional neural network to automate detection of focal cortical dysplasia, a common cause of epilepsy, in MRI images. The findings may help doctors diagnose the condition faster and more accurately. The paper was presented at the International Conference on Cognitive Sciences (Intercogncsci 2020).

Focal cortical dysplasia (FCD) is a congenital development malformation of the brain cortex, when neurons in a specific area fail to organize properly. It is one of the most common brain lesions that cause epilepsy, and it is usually diagnosed by a radiologist inspecting an MRI scan of the patient's brain.

The team led by Skoltech Professors Alexander Bernstein, Evgeny Burnaev and Senior Research Scientist Maxim Sharaev, decided to enhance the existing [deep learning](#)-based method of automating the detection of FCD. With the help of clinical partners they got labeled MRI scans of

patients with this diagnosis, as well as healthy subjects to train and use a [convolutional neural network](#), and used the Zhores supercomputing cluster for their calculations.

"Detecting the source of epilepsy is a very difficult task that requires special skills. Unfortunately, there is a significant shortage of radiologists who have relevant significant practical experience and are trained to look for such anomalies. As a result, inaccurate detection of epilepsy zones can lead to inefficiently planned surgical operations," Sharaev says.

There are just a few examples of using deep CNNs for this task, and one of the biggest problems researchers had to tackle was the lack of annotated data and its low quality. "To overcome this issue, we developed our own labeling system which helps the radiologist in annotating MRI images. Another issue is the three-dimensional nature of MR images, so here we present several solutions to work with 3D data as well as its 2D plane projections," Burnaev explains.

In the best-performing configuration of the model, FCD regions were successfully detected for 11 out of 15 subjects, the authors write. "It is the first example, a kind of proof-of-concept for our methods. A lot of work needs to be done to improve model quality, robustness and related things. Only after these issues are resolved we could think of clinical implementation for our neural network," Sharaev notes.

Now the team is working with clinical partners to obtain more data to train and validate the model as well as looking at different machine learning and deep learning architectures. "For instance, now some of our Ph.D. students are developing novel mesh-oriented and point cloud technologies to extract anomalies from 3D MRI data," Burnaev says.

The scientists are also working on a startup project—their web-based platform for MRI analysis is already being tested as an aid to radiologists that can help detect anomalies in scans. "In parallel, we are working on more sophisticated approaches, such as the one discussed in the current paper, which could result in a much more accurate automatic system for MRI analysis and detecting brain anomalies," he adds.

More information: Ruslan Aliev et al, Convolutional Neural Networks for Automatic Detection of Focal Cortical Dysplasia, *Advances in Cognitive Research, Artificial Intelligence and Neuroinformatics* (2021). DOI: [10.1007/978-3-030-71637-0_67](https://doi.org/10.1007/978-3-030-71637-0_67)

Provided by Skolkovo Institute of Science and Technology

APA citation: Neural network helps doctors detect epilepsy-causing malformation in the brain (2021, July 27) retrieved 16 October 2021 from <https://medicalxpress.com/news/2021-07-neural-network-doctors-epilepsy-causing-malformation.html>

This document is subject to copyright. Apart from any fair dealing for the purpose of private study or research, no part may be reproduced without the written permission. The content is provided for information purposes only.