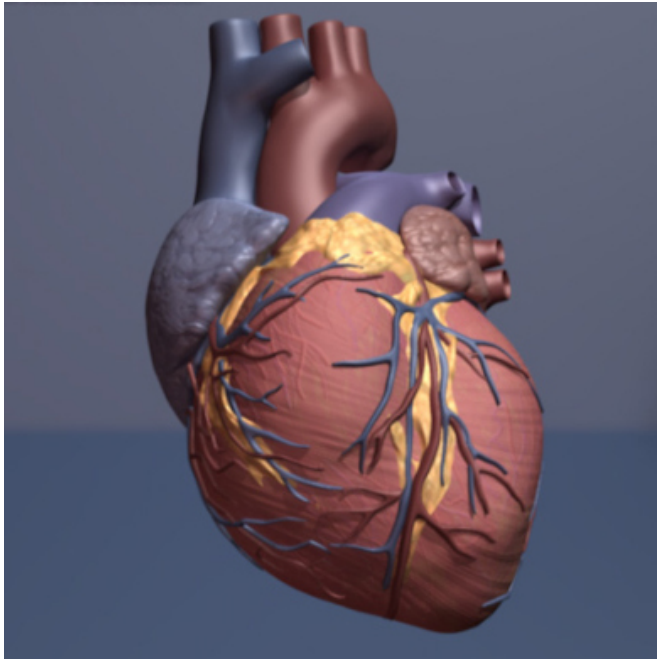


New model could improve treatment of rheumatoid arthritis patients with cardiac disease

16 September 2021



Human heart. Credit: copyright American Heart Association

Researchers from Queen Mary University of London have developed a new approach to address cardiac disease in rheumatoid arthritis (RA) patients.

Currently patients with RA are particularly susceptible to a type of cardiac deficiency termed [diastolic dysfunction](#), which may lead to heart failure, resulting in a higher mortality rate amongst this patient group.

The new study, published in *PNAS*, addresses this unmet clinical need by developing an experimental model of cardiomyopathy in inflammatory arthritis.

After several attempts the team of researchers

from Queen Mary's William Harvey Research Institute (WHRI) successfully identified the right model by characterizing experimental animals with arthritis. The animals developed cardiac diastolic dysfunction, recapitulating the symptoms presented by RA patients. Diastolic dysfunction means the heart is able to contract as normal but unable to dilate properly, ultimately leading to [heart failure](#) over time.

Professor Mauro Perretti, lead study author and Professor of Immunopharmacology at Queen Mary University of London said, "As is often the case, the description of a valid model of disease can open new vistas on pathogenic mechanisms as well as on novel therapeutic approaches. At present, the cardiomyopathy of patients affected by rheumatoid arthritis is not treated, and on top of this, current anti-rheumatic drugs (e.g. biologics or steroids) may even worsen it. As such there is an urgent therapeutic need to intervene and treat, if not cure, the cardiomyopathy of patients affected by [rheumatoid arthritis](#)."

"The broad area of cardiac inflammation is largely unexplored. At the WHRI we have several groups addressing experimental and translational work on several syndromes of the heart. Thus, there is work on myocarditis, on diabetes-induced cardiomyopathy and now with this study, the cardiomyopathy of inflammatory arthritis. The WHRI at Queen Mary University of London is a place of excellence to study cardiac inflammation in all its multiple faces, thanks also to our partnership with the Barts Heart Centre at Barts Health NHS Trust."

More information: Jianmin Chen et al, Annexin A1 attenuates cardiac diastolic dysfunction in mice with inflammatory arthritis, *Proceedings of the National Academy of Sciences* (2021). [DOI:](#)

[10.1073/pnas.2020385118](https://doi.org/10.1073/pnas.2020385118)

Provided by Queen Mary, University of London

APA citation: New model could improve treatment of rheumatoid arthritis patients with cardiac disease (2021, September 16) retrieved 29 November 2021 from

<https://medicalxpress.com/news/2021-09-treatment-rheumatoid-arthritis-patients-cardiac.html>

This document is subject to copyright. Apart from any fair dealing for the purpose of private study or research, no part may be reproduced without the written permission. The content is provided for information purposes only.